



The Foundation
Of Arts

The title 'THE WIZARD of OZ' is rendered in a stylized, golden, 3D font with a glowing effect. 'THE' is in a smaller, cursive font above 'WIZARD'. 'of' is in a smaller, cursive font below 'WIZARD'. 'OZ' is the largest letter, with the 'O' being a large circle and the 'Z' being a large, stylized letter. The background is a green circle on the left and a yellow brick wall pattern on the right.

THE
WIZARD
of
OZ

Presented By:



FIRST COMMUNITY BANK

Member FDIC

Where community comes first.

Season Sponsors



FUNDED BY JONESBORO
ADVERTISING & PROMOTION COMMISSION

Arkansas
Arts Council

OCCASIONS
Publishing Group

KASU
91.9FM • KASU.ORG

Jonesboro
Radio Group®



DACUS MINI WAREHOUSES



allen
ENGINEERING
CORPORATION

SOL
UTI
ONS the
solutions
group

EAB
EAST ARKANSAS
BROADCASTERS

Lost
Pizza
Co.



INTERSTATE
BATTERIES
Outrageously Dependable®



About the FOA



OUR MISSION

To engage people toward positive personal change through creativity as we enhance the quality of life of our community through the arts.

OUR VALUES

Growth & Creativity
Excellence & Quality
Access & Opportunity
Community & Individuality
Stewardship & Responsibility

GET INVOLVED

Attend a performance
Audition for a show
Volunteer to work a show
Participate in a fundraiser
Refer your friends
Make a donation
Take a class

STAY IN THE LOOP



Creative Team

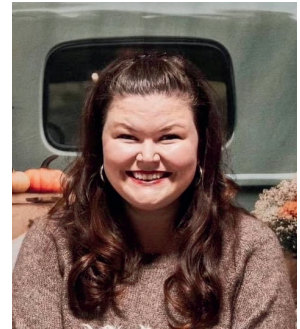


Kristi Pulliam, Director

Kristi has a long career in Educational and Community Theatre. She's directed around 50 titles and been involved in close to 70 productions over 30 years in theatre. She has had the most fun working with hundreds of volunteers in 2 decades at the Foundation of Arts. Lately, Kristi started Ktizo Coaching and Consulting, where she helps individuals and small businesses create and implement their brightest purpose. Just like Glinda says – we've always had the power!

Emily Strode, Assistant Director

Emily has been involved with the FOA since 2007. In addition to being seen onstage she has also worked behind the scenes on many productions serving as costumer, assistant director, and director. Emily taught high school Ridgefield Christian School and founded their theatre department in 2014. She now works for Jonesboro Public Schools. Most recently she was seen onstage in the FOA productions of Sweeney Todd, The Music Man, and Hallelujah Girls. She wishes to thank you all for supporting the arts in NEA and hopes you will enjoy "The Wizard of Oz."



Cori Cable Kidder, Choreographer

Cori is an alumna of Wynne High School and holds a Bachelor of Arts in Musical Theatre from Ouachita Baptist University. Choreography credits: Matilda, The Addams Family, How to Succeed in Business Without Really Trying, Joseph and the Amazing Technicolor Dreamcoat, Mary Poppins (Wynne High School). Children of Eden, The Sound of Music, Thoroughly Modern Millie (Ouachita Baptist University). Her company Confidence in Choreography specializes in

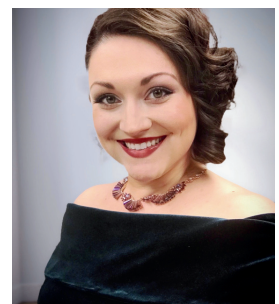
helping actors achieve excellence in all dance aspects of performance. She has worked alongside stars Judy Norton, Don Most, Rob Corddry, Megan Mullally, Will Sasso, and Valerie Harper. Cori is a lifetime member of The Actor's Studio and has studied with The Groundlings and at The American Academy of Dramatic Arts. www.coricable.com

Becky McAlister, Music Director

Becky is proud to be music directing her second show with the FOA. She holds a masters in vocal performance from Ole Miss and has been teaching for the past 6 years. She has previously been adjunct faculty with ASU as opera director and vocal instructor but currently holds the position of music and drama director at Ridgefield Christian School.

As a wife and mother of two, Mrs. McAlister considers herself

extremely blessed to get to get to perform, direct, and teach in the field of her passion. Wizard of Oz has some very challenging music and she is so proud of the cast and all their hard work!



Creative Team

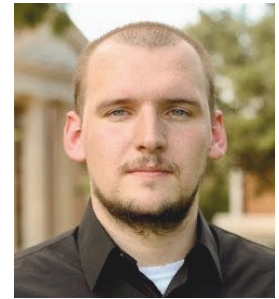


Joe Carr, Tech Director

Joe has served as Technical Director and Scenic & Lighting Designer for more than 50 productions. Besides enhancing the quality of FOA productions, he contributes occasionally to schools or other theatre groups with construction or design expertise. Joe is no stranger to the stage himself and has occasionally served as music director for a handful of productions. He is a musician and songwriter and has even had the pleasure of contributing original music to complement stories told on stage. Joe serves the FOA full-time as Creative Director leading our financial and technical operations.

James Rich, Technical assistant

James graduated Southern Arkansas University in the year of 2022. He moved to Jonesboro in 2023 and found The Foundation of Arts not long after his arrival. James has served as Technical Assistant for a total of 8 Productions! One of his favorite sets that he worked on was Charlottes Web.



Anna Ganong, Scenic Painter

Anna studied BSE Math at Arkansas State University. She has been in many FOA productions, including this show, the Wizard Of Oz.

Carmen Teague, Costumer

Carmen is a MacArthur Theatre Teacher and she has directed, designed, and/or performed in 16 shows. She loves all things theatre and loves bringing that excitement to the next generation. Carmen says that she is excited to bring Kristi's vision to life with her take on the Wizard of Oz.



Special Thanks

Lorenzo Balderas	Kara Anderson
Anna Ganong	Dana Bruff
Amanda Herget	Emily Bowman
Maranda Nichols	Crystal Berry
Chirs and Amy Jennings	

Show Music

Act 1

Over the Rainbow
Munchkinland
I'm Not a Witch
Ding Dong! The Witch Is Dead!
"If I Only Had a Brain"
We're Off to See the Wizard
"If Only I Had a Heart"
We're Off to See the Wizard
Lions, Tigers, and Bears
If I Only Had the Nerve
We're Off to See the Wizard
Poppies

15-minute intermission

Act 2

Entr'acte - Part One
Entr'acte - Part Two
The Marry Old Land of Oz
If I Were King of the Forest
March of the Winkies
Winkies Exit
Jitterbug
Winkies March
Ding Dong, The Witch is Dead

The Cast

Dorothy Gale.....Aubrey Goad
Aunt Em/Glinda.....Liz Eberle
Uncle Henry/Emerald City Guard.....Joe Carr
Zeke/Cowardly Lion.....Dillon Davis
Hickory/Tin Man.....Russ Pierce
Hunk/Scarecrow.....Abby Orr
Miss Almira Gulch/Wicked Witch of the West.....Amanda Fahlberg
Professor Marvel/Wizard of Oz.....Andrew Cheatham
Citizens of Munchkinland..... Betsy Pierce, Charlotte Rogers
Mayor..... Maranda Nichols
Coroner.....Meridith Pierce
Barrister..... Liz Goad
3 City Fathers..... AJ Walker-Beard, Sonnet Hicks, Samantha Robinson
3 Tough Guys.....Danielle Tarkington, Gabriel Oguntimehin, Silas Parks
Braggart.....Carlee Donaldson
2 School Teachers.....Clara Kelly, Nora Kiriazis
3 Tots.....Harper Overley, Kinley Gillean, Eden Agee
3 Crows.....Aaron Agee, Gage Cubit, Xander Leasure
3 Trees.....Anna Ganong, Liz Goad, Dana Bruff
Poppies.....Zoey Gonzalez, Klara Erickson,
Chloe Dominguez, AJ Walker-Beard, Ellie Gonzales

The Cast

Nikko.....McGuire Butts

Flying Monkeys.....Colton Bruff, Luciano Cazares

Beauticians.....Lucy Carr, Kasen Erickson, Anna Ganong

Polishers.....Gabriel Rodriguez, Carter Cavaness

Manicurists.....Kristi Leasure, Kate Huss

Jitterbugs.....Maggie Moyer,

Karleigh Anderson, Madalyn Stansbury

Winkies.....Maddie Maners,

Scarlett King, Maddie Duncan, Clairra Ewald, Madison Stitts, Leighton

Harris, Samantha Robinson, Sonnet Hicks, Sophia Cazares

Ozians.....James Ross,

LaReya Smith, Cece RebaCamp, Ellie Gonzales, Dana Bruff, Anna

Ganong, Ava Inman, Alexa Vail, Bethany Bradley, Aaron Agee, Grant

Massey, Maranda Nichols

Credits

RCS Screenplay By:

L. Frank Baum

Orchestration by:

Larry Wilcox

Background Music By:

Herbert Stothart

Music and Lyrics by:

Harold Arlen and E. Y. Harburg

Adaption By:

John Kane

Presented By:

Royal Shakespeare Company

Based upon the Classic Motion Picture owned by **Turner Entertainment Co.** and distributed in all media by **Warner Bros.**

Directors Note

Dear Patrons,

A lot has been written about *The Wizard of Oz* as a metaphor. The political symbolism of early 20th Century issues, psychological dream symbols, and even spiritual symbols of darkness and light could keep us talking for days. For the FOA production, I wanted to invite everyone to join in the story and focus on a truth that is as real as anything I know; what you focus on grows. We hear it often in short but powerful phrases and references: “Ask... seek... knock”, “reap what you sow”, “home is where the heart is”, and even “karma...”. Glinda alludes to it in the final scene in *Oz* with her words, “You’ve always had the power, Dorothy.” It’s that ability within each one of us to create our own story in partnership with a Divine Playwright.

The cast and crew I’ve been privileged to work with here have a pretty great concept of this truth. They know how to create joy by showing up at rehearsal ready to work together, and they know how to hone their leadership skills by being vulnerable enough to audition, accept, and grow into their roles. We all want you to enjoy our work, but most of all, we want you to deepen with happiness – if only just a little bit – from our time together.

With a Heart for the Arts,

Kristi

Stage Notes

Harper,
We love you so much and are so proud of you! It makes us happy to see you doing what you love.

Love,
Daddy, Mommy, and Beckham

Maggie,
We are so proud of you!
We can't wait to watch you jitterbug! Congratulations on another successful show!
We love you,
Dad, Mom, Reagan, and Jake

Gabriel Tobi,
The great Wizard of Oz himself said, "A heart is not judged by how much you love, but by how much you are loved by others." We hope you always feel the love we have for you, both on stage and off. You are the light that brightens our world.
Keep shining!!

Dear Ellie,
Sharing your talent of singing and dancing in theater has brought us all so much joy! We admire your determination and we are impressed by your accomplishments.
Love,
Your parents and brother

Chloe,
Your love for theater is so much fun to watch. We are so proud of your courage, bravery and determination.
We love you,
Dad, Mom, Lexi, Hannah and Rhett

Charlotte,
Congratulations! We are so proud of our little munchkin. You are so brave to step out in your first solo performance without us and we are so proud. Shine Bright Always!
Mom, Dad, Emmy Claire, Zoe, and Nellie Belle

Stage Notes

Nora,
We are so proud of you!

So Much Love,
Mom, Dad, Wes, Gimmie,
Papa, Grandma, and Grandpa

Dear Samantha,
We love you so much! We
are so proud of you!
Congratulations to you and
all the cast! We love you!

Mom, Brannon & Family

Aaron,
You're a natural and you
belong on stage! Good luck
and can't wait to see what
you do next.

Love,
Dad, Mom, & Avery

Eden,
We are so proud of you! You
make us so happy everyday!
You are going to do great.
Break a Leg!

Love,
Dad, Mom, & Avery

Danielle,
We can't wait to see you shine
sweet girl! We love you!

Love,
Mom & Dad

Kinley,
We are so proud of you! All
of your hard work and
dedication has really paid
off! We love you so much!

Love,
Mom and Kelsey



Art, Theatre, & Dance classes!
Ages 3 to adults!
Tuition Assistance Available!
New Student Trials!

VOTED BEST ART SCHOOL!



**REGISTER
TODAY!**



foajonesboro.org

2024-2025 Theatre Season



September
6th-8th & 13th-15th



October
10th-13th



November
21st-24th



December
12th- 17th



February
6th-9th



March
7th-9th & 14th-16th



June
13th-15th & 20th-22nd



July
18th-20th



August
1st-3rd

Foundation of Arts Staff

Joe Carr

Alyssa Cooper

Aubrey DeFries

Stephanie Epps

Anna Ganong

J Jagriti

Kelly Kelley

Jillian Laboy

Meridith Pierce

James Rich

Board of Directors

Dana Kelley / Maranda Nichols / Russ Pierce / Rob Spencer

Committees

Personnel & Education

Lesle Allen / Rebecca Orr / Russ Pierce / Janea Spades

Finance

Doug Maglothin / Rob Spencer

Development & Advocacy

Hans Hacker: Advocacy Chair

Lorenzo Balderas / Maranda Nichols / Rebecca Orr / Nancy Owens

Nominating

Lesle Allen / Maranda Nichols

Governance

Dana Kelly / Maranda Nichols / Janea Spades

Arts Center Instructors & Assistants

Aaliyah Spengler

Addie Escue

Anna Ganong

Annie Clark-Roberts

Caroline Haynie

David Mason

Emma Grace Brown

Lizzie Lewallen

Hayley Capps

Isabel Viala

Jennifer Carty

Jessica Maddox

Kasen Erickson

LeeAnn King

Maranda Nichols

Mary Leigh Allen

Matt E. Ball

Paulette Watson

Saniah Mitchell

Shawna Mann

Why Should I support the Foundation of Arts?

- We believe that engaging in the arts grows people and unites community
- We help people, and each other, learn discipline, teamwork, creativity, and focus through arts experiences - which arms them for success in any field
- We provide disciplined creative arts study and experiences trying our best to enable everyone to learn, regardless of their ability to pay
- We are a place for children and adults to participate in goal-oriented arts-study, in a non-competitive and technique-based environment
- We serve at least 500 families per week through arts education, theatre, and outreach activities
- We offer community theatre with ten different productions per year including The Nutcracker Ballet, musical theatre, and children's theatre
- We stand alone as an arts organization in Northeast Arkansas that provides live theatre at relatively low ticket prices for thousands of patrons each year—and a Pay What You Can performance for each show so that everyone can grow from live theatre
- We work with adults and children with disabilities through the arts, allowing them the opportunity to perform annually on stage
- We bring an annual count of 65,000 trips into downtown Jonesboro for our community
- We need your support—ticket sales and class tuition support only about half of what it takes to serve Northeast Arkansas and the more than 20,000 people we positively affect annually
- **WE ARE YOUR COMMUNITY!**

Professional Affiliations

Support for The Foundation of Arts is provided, in part, by the **Arkansas Arts Council**, an agency of the Department of Arkansas Heritage, and the National Endowment for the Arts.

Funding for advertising and promotion of The Foundation of Arts, its programs, and its events is provided, in part, by **The Advertising and Promotions Commission of Jonesboro**.

The Foundation of Arts, Forum Theater and The Arts Center are licensed under federal law by **SESAC, Inc.**

55 Music Square East
Nashville, TN 37203.

The Foundation of Arts, Forum Theater and The Arts Center are licensed under federal law by **BMI, Inc.**

10 Music Square East
Nashville, TN 37203.

The Foundation of Arts, Forum Theater and The Arts Center are licensed under federal law by ASCAP.

2675 Paces Ferry Road, SE, Suite 350
Atlanta, GA 30339.

The Foundation of Arts is a member of **Jonesboro Regional Chamber of Commerce**, American Association of Community Theatre, Arkansas Community Theatre Association, Americans for the Arts, Association for Fund Raising Professionals, and Arkansas Coalition for Excellence.

This performance has been legally licensed and all associated rights and royalties have been paid in full by The Foundation of Arts. Under strict penalty of law (punishable by steep fines, revocation of license, and/or imprisonment), no part of this production, nor any implications or representations of this production, can be reproduced for public, private, profitable, charitable, or other purposes.

Forum Theatre Etiquette

Our Performers Appreciate Your Best!

- Late arrivals must wait at the back of the house until a scene change.
- The videotaping or other video or audio recording of this production is strictly prohibited.
- Turn your cell phones OFF.
- If you need to leave your seat, please wait for a scene change if possible.
- In case of an emergency, exits are located in the front and back of the auditorium.
- Restrooms are located on the mezzanine and in the lobby.
- If you're not saving this playbill as a keepsake, please give it to a staff member or leave it at the Box Office after the performance.
- Please be respectful of everyone's choices as we've all chosen to be here in community.

If you'd like to go paperless—The FOA wants to help!
You can find our Playbill on Facebook, foajonesboro.org,
or you can scan one of the QR codes in the lobby!

Supporting the FOA

Make a financial gift:

Scan the QR code or visit foajonesboro.org/giving to make a one-time or recurring gift. Every donation is valuable in sustaining our organization and helping us create more opportunities for our community to experience the arts.



Donate an item from our **WISHLIST**:

- DEWALT 10 in. Job Site Table Saw with Rolling Stand
- 2 High-Back Executive Leather Office Chairs
- 8 matching Mid-Back Mesh Task Chairs
- RUBERMAID High-Capacity Cleaning Cart stocked with supplies
- 8 LIFETIME 8-foot rectangle folding table(s)
- 10 LIFETIME 6-foot round folding table(s)

We always welcome **donations** of...

- Non-slip hangers
- Large pieces of un-sewn fabric for costume shop
- 8-foot dimensional lumber (2x4s, 2x6s, 1x4s, 1x3s, 1x2s)
- 2-inch paint brushes
- Paint rollers and covers
- Art Supplies: acrylic paints, canvases, foam boards, sketch pads, etc.
- Office Supplies: post-it notes, ink pens, etc.

Support us while you **SHOP**:



Log in to your account at Kroger.com.
Locate the section titled Community Rewards.
Search "Foundation of Arts" (organization #WP291).
Shop as normal and the FOA gets a donation!

Thank You to our Generous Donors!

STARS (\$20,000+)

Parker, Don and Lynn

A & P Commission

Young, Joe Clay and Pam

Herget, Ted and Amanda

Arkansas Arts Council

CHAMPIONS (\$10,000+)

Allen Engineering, Inc.

Tedder, Barry and Lisa

St. Bernards Healthcare and Medical Group

Swept Away

Meyering, MG/Ferguson, Conley

Macon, Nikki

Howard, Don

Smith, Shane

Pulliam, Kevin and Kristi

PARTNERS (\$5,000+) ENTHUSIASTS (\$2,500+)

Pierce, Russ and Meridith

Ritter Communications

First Community Bank

NEA Baptist Clinic

Hospital Arkansas Community Foundation

Owens, Nancy

Parikh, Mona and James King

Nichols, Maranda

First National Bank

Parikh, Mona and James King

Cooper, Tim and Candace

Hytrol Conveyor Company, Inc.

Memphis Travel

First Horizon Bank

Arvest Bank

Arvest Bank Foundation

Signature Bank

Carr, Joe & Lauryn

City of Jonesboro

Hoffman, Matt and Courtney

Burns, Steve and Teresa

Wenger, Alyssa

Kueter, Diane

First Security Bank

Dacus, Max & Jennifer

Thank You to our Generous Donors!

ADVOCATES (\$1,000+)

Exchange Club of Jonesboro	Orr, Wally and Rebecca
Listenbee, Ryan and Kelli	Watson, Jeremy and Ashley
Dacus, Mary	Kelley, Dana and Kelly
Fahlberg, Zach and Amanda	Williams, Allen and Danna
Polk, Michael	Wiggins, Mark and Sondra
Deacon, Dorine	NEA Baptist Hospital Auxiliary
Hall, Ray and Barbara	Inboden, Mary Hollis
Shannon, Claudia	Miller, Kevin
Yarbrough, Lynn	Holloway, Bob and Margaret
Daniel, David	Mahan, Mitchell
Miller, Charles and Linda	Care Hospice, Inc.
Moore, Ryan and Angela	Dierksen Hospice
KASU Radio	Smith, Mark
	Corinth Coca Cola Bottling Works, Inc.

SUSTAINERS (\$500+)

Native Brew Works
United Cerebral Palsy of AR, Inc.
Spades, Janea
Ace One Technologies, LLC
Max Velocity Baseball, LLC
Escue, Jeremy and Amanda
Sammons, Nathan
Freeman, John and Lois
Lambert, Patricia
Childers, Chris and Judy
Gateway Sight and Sound
Way, Diana
Inboden, Kim and Toni
Sloan, Kitty
Kroger

Thank You to our Generous Donors!

ASSOCIATES (\$250+)

Allen, Eleanor	Leasure, Kristi
Langley, Sharon Spence	Rahrle, Linda
McDaniel, Scott & Taura	Balderas, Lorenzo and Erika
Haney, Faye	Gonzalez, April Bowman
Watkins, Brent and Patricia	Holmes, Paul and Tommie
Pierce, Judy	Turner, Frankie and Lisa
American Online Giving Foundation, Inc.	Bowman, Dr. and Mrs. Robert
Schaeffer, Mike and Lynn	Yates, Robin M.
Puryear, Jeffrey and Shannon	Stallings, Michael & Sheila
Adcox, Jimmy	Clements, William and Frances Malpezzi

FRIENDS(249 ↓)

Smith, Kirby	Allen, John and Caryn
Owens, Sarrah	Nisenbaum, Louis and Cathi
Maloney, Stephanie	Spades, William and Janea
Melton, Bud and Nancy	Goad, Bonnie
The Medicine Shoppe	Young, Mark and Mitzi
Johnson, Michael or Sandra	Defries, Aubrey
Cato Pet Hospital	Quinn, Johanna
Anonymous6	Wheeler, Mary J.
Lybolt, Robin	Moore, Randy and Kim
Nunnally, Lauren	Sharp Financial Services, Inc.
Anonymous5	Glascoock, Patricia
Patteson, Carter	Anderson, Jeff & Shelly
Frangenberg, Erin	Burrell, Henry
Washington, Gary	Mills, Lindsey
Cottam, Charles	Ramirez, Pedro
Smith, Beverly	Holbrook, Dave
Cutler, Larry and Ann	Salo, Jennifer
Kary, Jill	Coker, Sarah
Weeks, Hatton	Long, Julie
Carter, Cara	DeWitt, Carrie
Walker, Maria	Ross, Linda
Baker, Darrin	The Benevity Community Impact Fund

Ads

The Foundation of Arts and the City of Jonesboro are proud to partner in improving the Arts in Northeast Arkansas!



Ads

Northeast Arkansas' only local dance apparel COMPANY



dance shoes
Ballet · Tap · JAZZ
Contemporary



APPAREL
LEOTARDS · TOPS
BOTTOMS · DRESSES



ACCESSORIES
BOWS · EARRINGS
TIGHTS · BAGS



BLOCH

GETONPOINTE.DANCE
870.926.1320
2810 E. Highland Dr.



Thank You



for Donating the Bike!



Proudly Supports The Arts

"Without art, the crudeness of reality would make the world unbearable."

-George Bernard Shaw-



Benefits OF ART THERAPY



Reduces Stress

Improves Self Esteem

Encourages Creativity

Expresses Feelings

Increases Serotonin

Fosters Communication

SPONSORED BY

Kim Adams
MRS. NORTHEAST ARKANSAS INTERNATIONAL

Creator & Promoter of “Art Heals: Combating Anxiety and
Depression through Creative Outlets”

*Congratulations Everyone
on Your Wonderful
Performance!*

**NEA Baptist Clinic is
proud to sponsor the
Foundation of Arts
Wizard of Oz.**

Brannon Treece, MD
Family Medicine
Internal Medicine/Pediatrics



NEA BAPTIST 



Chicken Salad Chick
supports
The Foundation of Arts!

facebook.com/chickensaladchickjonesboro
@jonesborochickensaladchick

Lost
Pizza
Co.



906 Southwest Dr. Suite A
Jonesboro, AR 72401

Mon-Thu: 10AM-10PM
Fri-Sat: 10AM-11PM
Sun: 11AM-9PM

(870) 520-6227

Ads



MATT SILAS ARCHITECT



**212 EAST WASHINGTON AVE.
JONESBORO, AR 72401**



(870) 268-0500

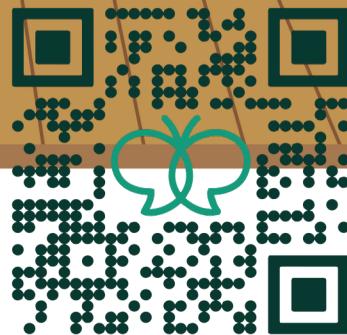


MATTSILASARCHITECT.COM

CME is proud
to support the

ARTS


CMEinc.
PEDIATRIC THERAPY



Ads

AFTER 36 YEARS OF HELPING CLIENTS BUILD & MARKET THEIR BRANDS, WE HAVE:



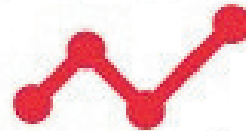
Conducted more than **37,000** brainstorming & creative meetings

Enjoyed over **707,000** pieces of various chocolates, candies & confections



Filmed more than **14,000** hours of video

Ordered over **61 MILLION** pages of printed materials



Created online content generating more than **113 MILLION** impressions, views, visits, likes & clicks



Hosted over **5,500** client & prospect lunches

Placed broadcast ads reaching more than **189 MILLION** audience members



Written more than **12 MILLION** words of copy

Consumed in excess of **442,000** cups, bottles, cans & glasses of coffee, water & soft drinks



the solutions group

solutions.marketing

Ads



Jonesboro



Radio Group®





SWEPT AWAY



Commercial • Industrial
Medical • Educational
Cleaning
Give us a call for your free
estimate!

(870) 340-8533

sweptawayjanitorial.com



TALK BUSINESS & POLITICS

Northeast Arkansas
Outstanding
Business Awards
2024 WINNER



Ads



**IS A PROUD SUPPORTER OF THE ARTS
THROUGHOUT THE COMMUNITY**

TO THOSE WHO ENRICH OUR LIVES
THROUGH THE PERFORMING ARTS, WE
OFFER A STANDING OVATION. THANK YOU!

WWW.ALLENENG.COM | 870.236.7751 | PARAGOULD, AR

Ads

EAB

EAST ARKANSAS BROADCASTERS

NEA SPORTS TALK
95.3
FM/970 AM
THE TICKET

 **95.9**
THE WOLF

101.7
KISS FM

94.1
THE BUZZ
EVERYTHING ROCK

101.3
NEWS
TALK
1230
KBTM

THE **BIG 107.9**
KFIN 

Ads



DJJA

DOWNTOWN
JONESBORO ALLIANCE

SUPERTINTS GRAPHICS

870-935-7799

VEHICLE WRAP COMPANY

Truck/Van Wraps

Signs

Banners

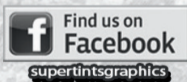
Logo Design

Fleet Graphics

Before



After



**open
6 days!**



3212 E. Nettleton Ave. 870-935-7799

Ads



Eat. Shop. Play. The local's guide to NEA.

explore MOR
Eat, shop, play.
the local's guide to NEA.

exploremornea.com

 Explore MOR NEA  @exploremor_nea

Dacus Mini Warehouses

Since 1977



Available Unit Sizes

5x10
10x10
10x12
10x20
10x30
10x40
12x30
12x40

- ▶ Insurance Available
- ▶ Fenced, 7-Day Access
- ▶ Over 700 Units
- ▶ 24 Hour Supervision

**Climate-Controlled
Units Available**

870.935.7860

www.dacusstorage.com
1804 West Washington



Outrageously Dependable®



Celebrating the Power of Community

At First Community Bank, we believe in the transformative power of the arts, and we are honored to support the vibrant artistic community that defines our region.



FIRST COMMUNITY BANK

Member FDIC

Where community comes first.

firstcommunity.net

JONESBORO 1617 S. Caraway Rd. | 630 Southwest Dr. | 222 E. Washington Ave. | 910 Chancery Ln. **870-932-5600**
BAY 306 Elder St. **870-890-2594** | **LEPANTO** 202 Greenwood Ave. **870-475-2306** | **BROOKLAND** 8101 Hwy 49 **870-932-5600**