

From the Novel by:
Valentine Davies

Adapted by:
MOUNTAIN COMMUNITY THEATER

Based upon the Twentieth Century Fox motion picture *Miracle on 34th Street*

Season Sponsors



AD



Outrageously Dependable®





Eat. Shop. Play. The local's guide to NEA.



explore
MOR
EXPLORING THE BEST OF NEA

exploreornea.com

f Explore MOR NEA @explore_mor_nea

Dacus Mini Warehouses

Since 1977



Thank you for voting us
Best Self Storage

Available Unit Sizes

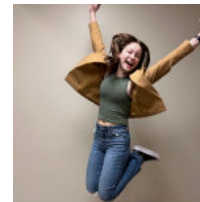
- 5x10**
- 10x10**
- 10x12**
- 10x20**
- 10x30**
- 10x40**
- 12x30**
- 12x40**

- ▶ Insurance Available
- ▶ Fenced, 7-Day Access
- ▶ Over 700 Units
- ▶ 24 Hour Supervision

Climate-Controlled
Units Available

870.935.7860

www.dacusstorage.com
1804 West Washington



OUR MISSION

To engage people toward positive personal change through creativity as we enhance the quality of life of our community through the arts.

OUR VALUES

Growth & Creativity
 Excellence & Quality
 Access & Opportunity
 Community & Individuality
 Stewardship & Responsibility

GET INVOLVED

Attend a performance
 Audition for a show
 Volunteer to work a show
 Participate in a fundraiser
 Refer your friends
 Make a donation
 Take a class

STAY IN THE LOOP



Creative Team

Jenny Smith, Director



Jenny is thrilled to be once again directing for the Foundation of Arts! Other shows she has directed for the FOA include The Jungle Book and The Hallelujah Girls. Other directorial credits include the LaBute New Theatre Festival for the St. Louis Actor's Theatre. As an actress, favorite roles include Isabelle in The School for Husbands at the Dorset Theatre Festival; Ellen in Over the Tavern, Norma/Karen in Plaza Suite, and Billie Dwyer in Unnecessary Farce at The Herb

Strauss Schoolhouse Theatre; Betty in Funny Money, Deedra in Always a Bridesmaid, and Sheree in The Sweet Delilah Swim Club at The Off-Broadway Palm Dinner Theatre; Debra in Present Tense; Pamela in Coffee House, Greenwich Village, as part of The Neil LaBute New Theatre Festival, 59E59, Off-Broadway in New York City. In the summer, Jenny spends her time working at The Fort Peck Summer Theatre as an actress, stage manager, props designer and scenic painter. As a props designer, Jenny has worked at professional theatres including The St. Louis Actor's Studio, The New Jewish Theatre, Upstream Theater, The Black Rep and Metro Theatre Company and as a deck hand for STAGES St. Louis. She has a Bachelor of Fine Arts-Theater from Arkansas State University and a Master of Fine Arts in Acting from the University of Arkansas, Fayetteville. Jenny and her boyfriend, Jason, have rescued 8 Boston Terriers through rescue organizations and one bossy Chihuahua off the mean streets of Jonesboro, Ar. For Mom, always Queen of the May.

Jenny Westmoreland, Assistant Director



Jenny works as a special education teacher at Valley View Junior High. She attended Arkansas State University where she obtained a B.S.E. in Social Science. She then earned a master degree in both Curriculum and Instruction and Special Education. Jenny is a National Board Certified Teacher. She has two daughters, Eleanor and Evie, with her husband John. Jenny participated in her first play in 2010. Since then, she has performed in Oklahoma, It's a

Wonderful Life (twice), The Secret Garden, Miracle on 34th Street, A Christmas Carol, Mamma Mia, Hallelujah Girls, The Odd Couple, and A Funny Thing Happened on the Way to the Forum, here at the Foundation of the Arts. She has assistant directed Beauty and the Beast, Matilda, Shrek Jr., Chitty Chitty Bang Bang, House of Villains, It's a Wonderful Life, Frozen Jr, and Music Man. She also costumed Music Man and Hallelujah Girls. In her spare time, she is a troop leader for her daughters' Girl Scout Troop. Her favorite holiday is Halloween and her family designs fun costumes every year. Some of her favorite costumes to create have been for The Greatest Showman cast, Loki Variants, Winnie Sanderson, and most recently Sleeping Beauty and Wednesday Addams. "You can be yourself any day of the year, except Halloween, when you can be anything you want!" Jenny has passed her love of theater on to her girls who are also in tonight's production.

AD

SUPERTINTS & GRAPHICS
870-935-7799
VEHICLE WRAP COMPANY

Truck/Van Wraps
Signs
Banners
Logo Design
Fleet Graphics

Before

After

open 6 days!

VOTED JONESBORO'S BEST!
DEMO'S BARBEQUE & SMOKEHOUSE

Find us on Facebook
superintintsgraphics

follow us on twitter
superintintsusa

VISA MasterCard DISCOVER

3212 E. Nettleton Ave. 870-935-7799



Joe Carr, Technical Director

Joe has served as Technical Director and Scenic & Lighting Designer for more than 50 productions. Besides enhancing the quality of FOA productions, he contributes occasionally to schools or other theatre groups with construction or design expertise. Joe is no stranger to the stage himself and has occasionally served as music director for a handful of productions. He is a musician and songwriter and has even had the pleasure of contributing original music to complement stories told on stage. Joe serves the FOA full-time as Creative Director leading our financial and technical operations

James Rich, Technician/Construction

James graduated Southern Arkansas University in the year of 2022. He moved to Jonesboro in 2023 and found The Foundation of Arts not long after his arrival. James has served as Technical Assistant for a total of 12 Productions! One of his favorite sets that he worked on was Charlottes Web.



Anna Ganong, Scenic Painter



Anna graduated with BSE Mathematics at Arkansas State University. She started her volunteer journey at the FOA in 2009. She has performed in 18 FOA productions and has assisted with scenic art for several others. Anna has honed her skills, not just as a performer, but also as a mentor to younger members of the organization. Her dedication to sharing her love of theater and mathematics has inspired many, encouraging them to explore the intersection of creativity and logic.

Run Crew

Sound Board: Joe Carr

Spotlight Operator: Ava Inman

Stage Manager and Fly Rail: Kilee Erickson

Assistant Stage manager: Michelle Neira

Music Set-Up: Maranda Nichols

About This Show

Synopsis

In this Christmas classic, an old man going by the name of Kris Kringle fills in for an intoxicated Santa in Macy's annual Thanksgiving Day parade. Kringle proves to be such a hit that he is soon appearing regularly at the chain's main store in midtown Manhattan. When Kringle surprises customers and employees alike by claiming that he really is Santa Claus, it leads to a court case to determine his mental health and, more importantly, his authenticity.

Scenes:

Central Park
Macy's
Following Tuesday
Santa's dais
Living room in Doris' apartment
Macy's Toy Department
Employee meeting room
Bellevue State Hospital

Intermission

Judges Chambers
Judge Harper's courtroom
Restaurant
Courtroom
Mail Room
Judges Chambers
Courtroom
A suburban street

Special Thanks

Stacy Johns		Safe Ship
Maranda Nichols	Mrs. John's Science classes	John Westmoreland
Kilee Erickson	Emily George/	Eleanor Westmoreland
Wanda and John Strode	5th and 7th period classes	Evie Westmoreland
Sarah Norris	Elisa Kifer	Kara Anderson
Anna and Charlotte Norris	Karleigh Anderson	Elleigh Anderson
Carter Cavaness		Allen and Judy Pierce

AD

EAB

EAST ARKANSAS BROADCASTERS

NEA SPORTS TALK
95.3/
FM/970 AM
THE TICKET

95.9
THE WOLF

101.7
KISS FM

94.1
THE BUZZ
EVERYTHING ROCK

101.3
NEWS
TALK
1230
KBTM

THE BIG 107.9
KFIN



**IS A PROUD SUPPORTER OF THE ARTS
THROUGHOUT THE COMMUNITY**

TO THOSE WHO ENRICH OUR LIVES
THROUGH THE PERFORMING ARTS, WE
OFFER A STANDING OVATION. THANK YOU!

WWW.ALLENENG.COM | 870.236.7751 | PARAGOULD, AR

The Cast

Doctor Pierce.....	Hans Hacker
Kris Kringle.....	Stephen Wright
Bag Lady.....	Sarah Norris
Rich Lady.....	Kate Huss
Shellhammer.....	Maranda Nichols
Doris Walker	Jenny Westmoreland
Susan Walker.....	Evie Westmoreland
Fred Gayley.....	Dillon Davis
Drunken Santa.....	Tommy Johns
Macy.....	Carter Cavaness
Sawyer/Parade Clown.....	Andrew Cheatham
Bloomington.....	Ethan Johns
Judge Harper.....	Tommy Johns
Finley.....	Karleigh Anderson
Mara.....	Kate Huss
Halloran.....	Hans Hackers
Duncan.....	Josh Duncan
Janet Mara.....	Elleigh Anderson
Al & Lou.....	Carter Cavaness/Kara Anderson
Elf Q.....	Ashtyn Wright
Elf Z.....	AJ Walker-Beard
Elf J.....	Josh Duncan
Dancing Elves Dance Captain.....	Karleigh Anderson
Dancing Elves	Sophia Cazares, AJ Walker-Beard, Mia Neira, Annapearce Fairhead
Johnny.....	Sophia Cazares
Johnny's Mother.....	Kate Huss
Sharon/ caroler.....	Oakley Sitz
Sharon's mother/ caroler.....	Kara Anderson
Megan/ caroler.....	Charlotte Norris
Megan's mother/ caroler.....	Jacie Batten
Dutch girl/ caroler.....	Anna Norris
Dutch girl's mom.....	Sarah Norris
Carolers/ Santa Children.....	Emma Neira, Mia Neira
Pedestrians.....	Kara Anderson, Jacie Batten, Sarah Norris
Mail Attendants.....	Carter Cavaness, Sarah Norris, Josh Duncan, Jacie Batten, Kara Anderson
Photographers.....	Kara Anderson, Jacie Batten

Directors Note

The Miracle on 34th Street asks it's characters to believe and to have faith. How can we, when they are intangible, when we have no proof?

Whether Kris Kringle is the real Santa Claus isn't the real question.

The question is, how can we remain kind, helpful, optimistic and neighborly if we do not have the faith that we can depend on others to treat us the same? Or that we will get something in return, like a really nice Christmas gift? A true miracle is helping someone in need, being a kind human in the face of cynicism, optimistic in a world that seems divided and dark without being rewarded in return. A belief in the goodness of mankind and the faith they will respond in kind. Give and take. Sharing and caring. Those seem like really good words but are so hard to do sometimes. But, what if, in our own little community, we spread kindness and joy and faith, that it ripples out into our state and into our country and then our whole world. Seems impossible, doesn't it? Have faith. Don't stop believing.

Jenny Smith

AD



SWEPT AWAY



Commercial • Industrial
Medical • Educational
Cleaning
Give us a call for your free
estimate!

(870) 340-8533

sweptawayjanitorial.com



TALK BUSINESS & POLITICS

Northeast Arkansas
Outstanding
Business Awards
2024 WINNER





Dear Wonderful Cast,

Ho ho ho! It's Santa Claus here, checking in from the North Pole! I've been hearing great things about all of you this year - your kindness, curiosity, and hard work are truly shining bright! Keep up the good deeds, and remember to always be kind to one another. I can't wait to visit your town soon and see all the beautiful smiles on Christmas Eve!

Merry Christmas,
Santa Claus

Santas List

Naughty List:

Maranda Nichols
Jenny Westmoreland
Hans Hacker
Sarah Norris
Kate Huss
Dillon Davis
Tommy Johns
Andrew Cheatham
Ethan Johns
Kara Anderson
Jacie Batten
Kilee Erickson
Michelle Neira

Nice List:

Evie Westmoreland
Eleanor Westmoreland
Carter Cavaness
Karleigh Anderson
Josh Duncan
Elleigh Anderson
Ashtyn Wright
AJ Walker-Beard
Sophia Cazares
Mia Neira
Annapearce Fairhead
Oakley Sitz
Charlotte Norris
Anna Norris
Emma Neira



AD

AFTER **36 YEARS** OF HELPING CLIENTS
BUILD & MARKET THEIR BRANDS, WE HAVE:



Conducted
more than
37,000
brainstorming
& creative
meetings

Enjoyed over
707,000
pieces of various
chocolates, candies
& confections



Filmed more than
14,000
hours of video

Ordered over
61 MILLION
pages of printed
materials



Created online
content generating
more than
113 MILLION
impressions,
views, visits,
likes & clicks



Hosted over
5,500
client & prospect
lunches

Placed broadcast ads
reaching more than
189 MILLION
audience members



Written more than
12 MILLION
words of copy

Consumed in excess of
442,000
cups, bottles, cans
& glasses of coffee,
water & soft drinks



SOL
UTI
ONS

the
solutions
group

solutions.marketing

AD

CME is proud
to support the

ARTS

CMEinc.
PEDIATRIC THERAPY



AD



**Don't miss our "Express Yourself" Category for
grades 5- 12!**

Early Bird Discount Deadline: December
15, 2024

Regular Deadline: January 31, 2025

Final Submission Deadline: February 22,
2025

Learn more & submit:
oasisfest.org/film

AD

**JOIN
OUR WEEKLY
CLASSES**

AGES 3 & UP!



NEW STUDENT TRIALS

Sign up for a New Student Trial and try any art, dance, or theatre classes for a week for just \$35 ! Scan QR code to fill out a short new student inquiry form.



AD



MATT SILAS ARCHITECT



212 EAST WASHINGTON AVE.
JONESBORO, AR 72401



(870) 268-0500



MATTSILASARCHITECT.COM



Our Performers Appreciate Your Best!

Late arrivals must wait at the back of the house until a scene change.

The videotaping or other video or audio recording of this production is strictly prohibited.

Turn your cell phones OFF.

If you need to leave your seat, please wait for a scene change if possible.

In case of an emergency, exits are located in the front and back of the auditorium.

Restrooms are located on the mezzanine and in the lobby.

If you're not saving this playbill as a keepsake, please give it to a staff member or leave it at the Box Office after the performance.

Please be respectful of everyone's choices as we've all chosen to be here in community.

Thank you!

Joe Carr
Alyssa Cooper
Aubrey DeFries
Stephanie Epps
Anna Ganong
J Jagriti
Kelly Kelley
Jillian Laboy
Meridith Pierce
James Rich

Board of Directors

Dana Kelley / Maranda Nichols / Russ Pierce / Rob Spencer

Committees

Personnel & Education

Lesle Allen / Rebecca Orr / Russ Pierce / Janea Spades

Finance

Doug Maglothin / Rob Spencer

Development & Advocacy

Hans Hacker: Advocacy Chair

Lorenzo Balderas / Maranda Nichols / Rebecca Orr / Nancy Owens

Nominating

Lesle Allen / Maranda Nichols

Governance

Dana Kelly / Maranda Nichols / Janea Spades

Arts Center Instructors & Assistants

Aaliyah Spengler	Lizzie Lewallen	Maranda Nichols
Addie Escue	Isabel Viala	Mary Leigh Allen
Anna Ganong	Jennifer Carty	Matt E. Ball
Annie Clark-Roberts	Jessica Maddox	Paulette Watson
David Mason	Kasen Erickson	Shawna Mann
Erika Parker	LeeAnn King	Angela Castro
Madalyn Stansbury	Emma King	Adalai Weeks
		Annabelle Escue



Chicken Salad Chick *supports* The Foundation of Arts!

facebook.com/chickensaladchickjonesboro
@jonesborochickensaladchick

Benefits OF ART THERAPY



- Reduces Stress
- Improves Self Esteem
- Encourages Creativity
- Expresses Feelings
- Increases Serotonin
- Fosters Communication

SPONSORED BY

Kim Adams
MRS. NORTHEAST ARKANSAS INTERNATIONAL

Creator & Promoter of "Art Heals: Combating Anxiety and Depression through Creative Outlets"

Why Should I support the Foundation of Arts?

- We believe that engaging in the arts grows people and unites community
- We help people, and each other, learn discipline, teamwork, creativity, and focus through arts experiences - which arms them for success in any field
- We provide disciplined creative arts study and experiences trying our best to enable everyone to learn, regardless of their ability to pay
- We are a place for children and adults to participate in goal-oriented arts-study, in a non-competitive and technique-based environment
- We serve at least 500 families per week through arts education, theatre, and outreach activities
- We offer community theatre with ten different productions per year including The Nutcracker Ballet, musical theatre, and children's theatre
- We stand alone as an arts organization in Northeast Arkansas that provides live theatre at relatively low ticket prices for thousands of patrons each year—and a Pay What You Can performance for each show so that everyone can grow from live theatre
- We work with adults and children with disabilities through the arts, allowing them the opportunity to perform annually on stage
- We bring an annual count of 65,000 trips into downtown Jonesboro for our community
- We need your support—ticket sales and class tuition support only about half of what it takes to serve Northeast Arkansas and the more than 20,000 people we positively affect annually
- WE ARE YOUR COMMUNITY!

Professional Affiliations

Support for The Foundation of Arts is provided, in part, by the **Arkansas Arts Council**, an agency of the Department of Arkansas Heritage, and the National Endowment for the Arts.

Funding for advertising and promotion of The Foundation of Arts, its programs, and its events is provided, in part, by **The Advertising and Promotions Commission of Jonesboro**.

The Foundation of Arts, Forum Theater and The Arts Center are licensed under federal law by **SESAC, Inc.**
55 Music Square East
Nashville, TN 37203.

The Foundation of Arts, Forum Theater and The Arts Center are licensed under federal law by **BMI, Inc.**
10 Music Square East
Nashville, TN 37203.

The Foundation of Arts, Forum Theater and The Arts Center are licensed under federal law by ASCAP.
2675 Paces Ferry Road, SE, Suite 350
Atlanta, GA 30339.

The Foundation of Arts is a member of **Jonesboro Regional Chamber of Commerce**, American Association of Community Theatre, Arkansas Community Theatre Association, Americans for the Arts, Association for Fund Raising Professionals, and Arkansas Coalition for Excellence.

This performance has been legally licensed and all associated rights and royalties have been paid in full by The Foundation of Arts. Under strict penalty of law (punishable by steep fines, revocation of license, and/or imprisonment), no part of this production, nor any implications or representations of this production, can be reproduced for public, private, profitable, charitable, or other purposes.

AD



Proudly Supports The Arts

*"Without art, the crudeness
of reality would make the
world unbearable."
-George Bernard Shaw-*



Our Performers Appreciate Your Best!

- Late arrivals must wait at the back of the house until a scene change.
- The videotaping or other video or audio recording of this production is strictly prohibited.
- Turn your cell phones OFF.
- If you need to leave your seat, please wait for a scene change if possible.
- In case of an emergency, exits are located in the front and back of the auditorium.
- Restrooms are located on the mezzanine and in the lobby.
- If you're not saving this playbill as a keepsake, please give it to a staff member or leave it at the Box Office after the performance.
- Please be respectful of everyone's choices as we've all chosen to be here in community.

Northeast Arkansas' only local dance apparel COMPANY



dance shoes
Ballet · Tap · Jazz
Contemporary



APPAREL
LEOTARDS · TOPS
BOTTOMS · DRESSES



ACCESSORIES
BOWS · EARRINGS
TIGHTS · BAGS



GETONPOINTE.DANCE
870.926.1320
2810 E. Highland Dr.



If you'd like to go paperless—The FOA wants to help!
Scan one of the QR codes in the lobby for a digital
version of the Playbill.



Season Tickets: PICK YOUR 4!

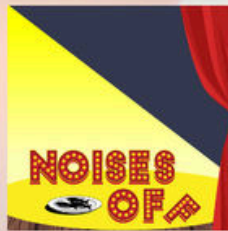
Makes the perfect stocking stuffer!



December 12, 13, 14, 15, 16 & 17



January 30, 31, Feb 1 & 2



April 4, 5, 6 & 7



June 13, 14, 15, 20, 21 & 22



July 18, 19 & 20



August 1, 2 & 3

The Foundation of Arts and the City of Jonesboro are proud to partner in improving the Arts in Northeast Arkansas!



Thank You to our Generous Donors!

ASSOCIATES (\$250+)

Allen, Eleanor
Langley, Sharon Spence
McDaniel, Scott & Taura
Haney, Faye
Watkins, Brent and Patricia
Pierce, Judy
American Online Giving Foundation, Inc.
Schaeffer, Mike and Lynn
Puryear, Jeffrey and Shannon
Adcox, Jimmy

Leasure, Kristi
Rahrle, Linda
Balderas, Lorenzo and Erika
Gonzalez, April Bowman
Holmes, Paul and Tommie
Turner, Frankie and Lisa
Bowman, Dr. and Mrs. Robert
Yates, Robin M.
Stallings, Michael & Sheila
Clements, William and Frances Malpezzi

FRIENDS(249 ↓)

Smith, Kirby
Owens, Sarrah
Maloney, Stephanie
Melton, Bud and Nancy
The Medicine Shoppe
Johnson, Michael or Sandra
Cato Pet Hospital
Anonymous6
Lybolt, Robin
Nunnally, Lauren
Anonymous5
Patteson, Carter
Frangenberg, Erin
Washington, Gary
Cottam, Charles
Smith, Beverly
Cutler, Larry and Ann
Kary, Jill
Weeks, Hatton
Carter, Cara
Walker, Maria
Baker, Darrin

Allen, John and Caryn
Nisenbaum, Louis and Cathi
Spades, William and Janea
Goad, Bonnie
Young, Mark and Mitzi
Defries, Aubrey
Quinn, Johanna
Wheeler, Mary J.
Moore, Randy and Kim
Sharp Financial Services, Inc.
Glascoock, Patricia
Anderson, Jeff & Shelly
Burrell, Henry
Mills, Lindsey
Ramirez, Pedro
Holbrook, Dave
Salo, Jennifer
Coker, Sarah
Long, Julie
DeWitt, Carrie
Ross, Linda
The Benevity Community Impact Fund

Supporting the FOA

Make a financial gift:

Scan the QR code or visit foajonesboro.org/giving to make a one-time or recurring gift. Every donation is valuable in sustaining our organization and helping us create more opportunities for our community to experience the arts.



Donate an item from our **WISHLIST**:

- DEWALT 10 in. Job Site Table Saw with Rolling Stand
- 2 High-Back Executive Leather Office Chairs
- 8 matching Mid-Back Mesh Task Chairs
- RUBERMAID High-Capacity Cleaning Cart stocked with supplies
- 8 LIFETIME 8-foot rectangle folding table(s)
- 10 LIFETIME 6-foot round folding table(s)

We always welcome **donations** of...

- Non-slip hangers
- Large pieces of un-sewn fabric for costume shop
- 8-foot dimensional lumber (2x4s, 2x6s, 1x4s, 1x3s, 1x2s)
- 2-inch paint brushes
- Paint rollers and covers
- Art Supplies: acrylic paints, canvases, foam boards, sketch pads, etc.
- Office Supplies: post-it notes, ink pens, etc.

Support us while you **SHOP**:



Log in to your account at Kroger.com.
Locate the section titled Community Rewards.
Search "Foundation of Arts" (organization #WP291). Shop as normal and the FOA gets a donation!

Thank You to our Generous Donors!

STARS (\$20,000+)

Parker, Don and Lynn

A & P Commission

Young, Joe Clay and Pam

Herget, Ted and Amanda

Arkansas Arts Council

CHAMPIONS (\$10,000+)

Allen Engineering, Inc.

Tedder, Barry and Lisa

St. Bernards Healthcare and Medical Group

Swept Away

Meyering, MG/Ferguson, Conley

Macon, Nikki

Howard, Don

Smith, Shane

Pulliam, Kevin and Kristi

PARTNERS (\$5,000+)

Pierce, Russ and Meridith

Ritter Communications

First Community Bank

NEA Baptist Clinic

Arkansas Community Foundation

Owens, Nancy

Parikh, Mona and James King

Nichols, Maranda

First National Bank

Parikh, Mona and James King

Cooper, Tim and Candace

Hytrol Conveyor Company, Inc.

Memphis Travel

First Horizon Bank

ENTHUSIASTS

(\$2,500+)

Arvest Bank

Arvest Bank Foundation

Signature Bank

Carr, Joe & Lauryn

City of Jonesboro

Hoffman, Matt and Courtney

Burns, Steve and Teresa

Wenger, Alyssa

Kueter, Diane

First Security Bank

Dacus, Max & Jennifer

Thank You to our Generous Donors!

ADVOCATES (\$1,000+)

Exchange Club of Jonesboro

Listenbee, Ryan and Kelli

Dacus, Mary

Fahlberg, Zach and Amanda

Polk, Michael

Deacon, Dorine

Hall, Ray and Barbara

Shannon, Claudia

Yarbrough, Lynn

Daniel, David

Miller, Charles and Linda

Moore, Ryan and Angela

KASU Radio

Orr, Wally and Rebecca

Watson, Jeremy and Ashley

Kelley, Dana and Kelly

Williams, Allen and Danna

Wiggins, Mark and Sondra

NEA Baptist Hospital Auxiliary

Inboden, Mary Hollis

Miller, Kevin

Holloway, Bob and Margaret

Mahan, Mitchell

Care Hospice, Inc.

Dierksen Hospice

Smith, Mark

Corinth Coca Cola Bottling Works, Inc.

SUSTAINERS (\$500+)

Native Brew Works

United Cerebral Palsy of AR, Inc.

Spades, Janae

Ace One Technologies, LLC

Max Velocity Baseball, LLC

Escue, Jeremy and Amanda

Sammons, Nathan

Freeman, John and Lois

Lambert, Patricia

Childers, Chris and Judy

Gateway Sight and Sound

Way, Diana

Inboden, Kim and Toni

Sloan, Kitty

Kroger