



Compassionate, high quality  
care for your child

NEA Baptist Clinic pediatricians are the  
experts you can trust.

And now you can be on top of your child's health with Baptist One Care  
MyChart. Keep up with your child's immunizations, growth charts and  
prescriptions all electronically. [BaptistOneCare.org](http://BaptistOneCare.org)

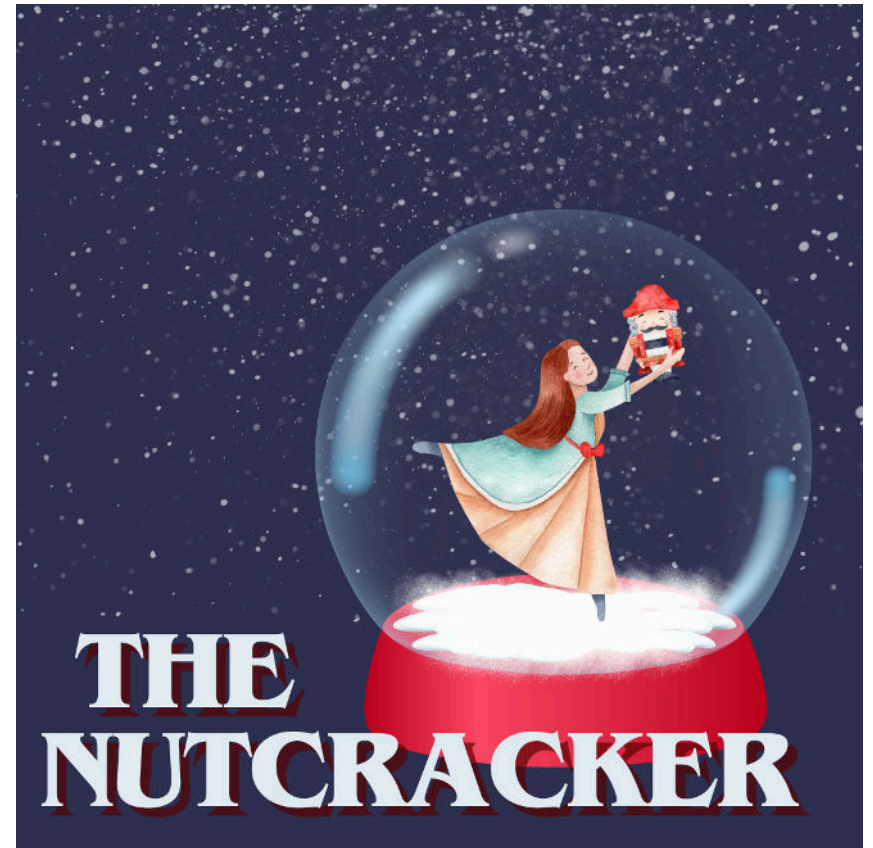
**MaryJoanne Umeora, MD • Anna Easterling, APRN**  
**Priscilla Fortner, APRN • Tomorrow Potter, APRN**  
Accepting New Patients

Get Better.

870-936-7937 • 4910 Medical Blvd, Ste A • the Reserve at NEA • Jonesboro



The Foundation  
Of Arts



Presenting Sponsor:



Season Sponsors



AD



Outrageously Dependable®





Eat. Shop. Play. The local's guide to NEA.



exploremornea.com

f Explore MOR NEA @exploremor\_nea

## Dacus Mini Warehouses

Since 1977



Available Unit Sizes

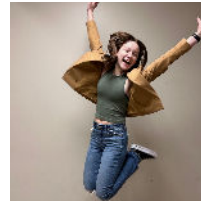
- 5x10
- 10x10
- 10x12
- 10x20
- 10x30
- 10x40
- 12x30
- 12x40

- ▶ Insurance Available
- ▶ Fenced, 7-Day Access
- ▶ Over 700 Units
- ▶ 24 Hour Supervision

Climate-Controlled  
Units Available

870.935.7860

www.dacusstorage.com  
1804 West Washington



## OUR MISSION

To engage people toward positive personal change through creativity as we enhance the quality of life of our community through the arts.

## OUR VALUES

- Growth & Creativity
- Excellence & Quality
- Access & Opportunity
- Community & Individuality
- Stewardship & Responsibility

## GET INVOLVED

- Attend a performance
- Audition for a show
- Volunteer to work a show
- Participate in a fundraiser
- Refer your friends
- Make a donation
- Take a class

## STAY IN THE LOOP



## Creative Team

### Isabel Viala, Director

Isabel had been an instructor at the Foundation of Arts for 5 years now. She is a graduate of the TAP program and loves teaching ballet. Isabel has been dancing since she was 8 and trained in Ballet, Pointe, PBT, Jazz, and Partnering. She has served as the Assistant Director for the Nutcracker Ballet and Snow White. Some of her favorite ballet productions she has been in include The Nutcracker, Swan Lake, and Exodus the Ballet. Isabel is currently a junior at Arkansas State University double majoring in Business Administration and Business Management. Isabel is so very passionate about dance and loves being able to share her passion with her students.



### Emma King, Assistant Director/ Choreographer

Emma is a 20-year-old Information Systems and Business Analytics major at Arkansas State University. She is a former dancer at The Foundation of Arts where she danced for 17 years and has been working at the FOA for the past 2 years. She has loved being involved with the Nutcracker Ballet again as the Assistant Director.



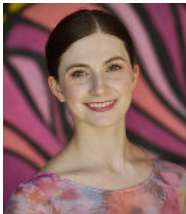
### Abi Mason, Choreographer

Abi was born and raised in Jonesboro, with the FOA as her second home. She has been involved in dance and theatre in various capacities for over 20 years and loves to choreograph for ballets and musicals at the Foundation of Arts as well as for schools around the area. Abi is a hair stylist, as well as a fingerprint technician here in Jonesboro. She lives in Trumann with her husband, Paydon, and their two dogs Gracie Mae and Sutton.



### Jessica Maddox, Choreographer

Jessica has been a dedicated teacher at the FOA for several years. She instructs both our advanced ballet classes and adult ballet sessions. Additionally, she has participated in numerous ballet productions, including The Nutcracker and Snow White Ballet.



### Leeann King, Choreographer

LeeAnn King, a Jonesboro native, has over 20 years of teaching experience at the Foundation of Arts (FOA), specializing in ballet, pointe, lyrical, and choreography. She trained under notable instructors and received an invitation to join Ballet Chicago's pre-professional company. LeeAnn is certified in Progressing Ballet Technique (PBT) and has performed in various productions, including The Nutcracker and George Balanchine's Serenade. She has directed and choreographed numerous ballets and musicals, teaching technique to the Jonesboro High School dance team for over a decade. LeeAnn is married with two children, one of whom is a ballet dancer.



### Aaliyah Spengler, Choreographer

Aaliyah Spengler is 19 years old and a college sophomore. She has danced at the FOA for 14 years. A few major productions she has participated in was the annual Nutcracker, CATS, Swan Lake, Coppelia, etc. She has also helped teaching choreography for the Nutcracker as well as choreographed Finding Nemo. She has been teaching beginning Tap/Jazz for the past two years and has began to teach Advanced Jazz this past summer.



AD

**SUPERTINTS & GRAPHICS**  
870-935-7799  
**VEHICLE WRAP COMPANY**

Truck/Van Wraps  
Signs  
Banners  
Logo Design  
Fleet Graphics

Before

After

open 6 days!

Find us on Facebook  
supertintsgraphics

follow us on twitter  
supertintssasa

VOTED JONESBORO'S BEST!  
DEMO'S BARBEQUE & SMOKEHOUSE

VISA MasterCard DISCOVER

3212 E. Nettleton Ave. 870-935-7799



### Heather Driscoll, Costumer



Heather has been a part of the FOA for the past 20 years and considers it her second home. Both of her daughters grew up on the FOA stage dancing and performing in the Nutcracker Ballet, taking numerous classes and teaching dance. They were a scholarship/workstudy family and both her daughters were TAP graduates. Heather started volunteering to help with costuming, many years ago, because of her daughters' love for performing in the Nutcracker Ballet and wanting to be involved in the production. She is extremely grateful for the opportunity she was given when asked to be the lead costumer for the 2021 Nutcracker Ballet. She subsequently took over the ballet shop and costuming all FOA ballets. She finds great joy in watching a performer's face light excitement when they try on their costume for the first time. In the past, she has also assistant directed several shows, including Nutcracker, run lighting and taken photography for the FOA. Heather loves the many friends she has made thru the FOA and considers them family. She is a graduate of Penn State University and currently works for the State of Arkansas-Public Defender's Commission. She is mom to Sydney and Ashley, mother-in-law to Kenton and Nana to Sunny James.

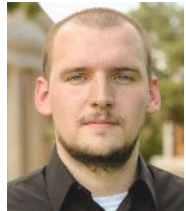


### Joe Carr, Technical Director/Set Design

Joe has served as Technical Director and Scenic & Lighting Designer for more than 60 productions. Besides enhancing the quality of FOA productions, Joe is no stranger to the stage himself and has occasionally served as music director for a handful of productions. He is a musician and songwriter and has even had the pleasure of contributing original music to complement stories told on stage. Joe serves the FOA full-time as Creative Director leading our financial and technical operations

### James Rich, Lighting Design/Construction

James graduated Southern Arkansas University in the year of 2022. He moved to Jonesboro in 2023 and found The Foundation of Arts not long after his arrival. James has served as Technical Assistant for a total of 12 Productions! One of his favorite sets that he worked on was Charlottes Web.



### Anna Ganong, Scenic Painter

Anna graduated with BSE Mathematics at Arkansas State University. She started her volunteer journey at the FOA in 2009. She has performed in 18 FOA productions and has assisted with scenic art for several others. Anna has honed her skills, not just as a performer, but also as a mentor to younger members of the organization. Her dedication to sharing her love of theater and mathematics has inspired many, encouraging them to explore the intersection of creativity and logic.

### Run Crew

**Sound and Light Operator:** James Rich

**Spotlight Operators:** Lucy Carr and Emery Vinson

**Stage Manager:** Emma King

**Assistant Stage manager:** Kasen Erickson

**Fly Rail:** Reid Rogers and Matthew Stansbury

**Pre-Show**

**Teacher: Mary Allen**

Macy Epps  
 Piper Beck  
 Wesley Kiriazis  
 Aria Aguilera  
 Elizabeth McClung  
 Eleanor Dudley  
 Millie Wright  
 Atlas Fair

**Teacher: Lizzie Lewallen**

Xue White  
 Elsie Finley  
 Freya Young  
 Anika Vipparthy  
 Sylvia Combs  
 Hallie Looney  
 Eleanor Garner

**Teacher: Mary Allen**

Ellenor Eanes  
 Naomi Housh  
 Maggie Sanders  
 Juniper Ward

**ACT 1:**

Overture  
 Marie and Fritz  
 March  
 Father and Daughter Dance  
 Gifts  
 Herr Drosselmeier's Gifts  
 Grandfather's Dance  
 Guests Depart  
 Marie's Dream  
 The Battle  
 Pre-Snow  
 Waltz of the Snow

**Intermission**

**ACT 2:**

Angels  
 Hot Chocolate  
 Clara and the Prince/Opening  
 Coffee  
 Candy Cane  
 Toffee & Tea  
 Mother Ginger/Polichinelles  
 Waltz of the Flowers  
 Sugarplum Fairy and Covalier  
 Covalier Solo  
 Sugarplum Fairy Solo  
 Coda  
 Finale



**EAST ARKANSAS  
 BROADCASTERS**





# Keep Jonesboro Beautiful

KEEP AMERICA BEAUTIFUL AFFILIATE

## The Cast

<b>Clara</b> .....	Madalyn Stansbury
<b>Fritz</b> .....	Danielle Tarkington
<b>Mr. Stalbaum</b> .....	Matthew Stansbury
<b>Mrs. Stalbaum</b> .....	Kathryn Stansbury
<b>Drosselmeyer</b> .....	Kevin Wells
<b>Drosselmeyer’s Nephew/Nutcracker Prince</b> .....	Gavin Frangenberg
<b>Party Girls</b> .....	Lily Martin, Cora Boves, Callie Cook, Chandler King, Kinley Gillean, Clara Kelly
<b>Party Boys</b> .....	Lillian Weeks, Sonnet Hicks, Leighton Harris, Maddie Duncan, Jane Myers, Lila Klasky
<b>Party Adults</b> .....	Reid Rogers, Paige Rogers, Lydia Howard, Shawna Mann, Norman Dickson, Elizabeth Fairhead, Aubrey Rogers, Aaron Agee, Luciano Cazares
<b>Maids</b> .....	Millie Nowlin, Scarlett Gibson, Rose-Tralee Ellenburg
<b>Fairy Doll</b> .....	Jessica Maddox
<b>Ballerina Doll/Hot Chocolate</b> .....	Chloe Viala
<b>Mouse Queen</b> .....	Clare Klutz
<b>Little Mice</b> .....	Madilyn Mann, Aria Tribble, Juniper Wilkey, Brooklynn Edmondson, Laynee Cavaness, Blakely Carter, Natalie Gibbons, Jayan Parikh King
<b>Mouse Army</b> .....	Sophia Cazares, Annalee Meredith, Emmy Claire Rogers, Amelia Palmer
<b>Soldiers</b> .....	Cora Boves, Lila Klasky, Clair Ewald, Lillian Weeks

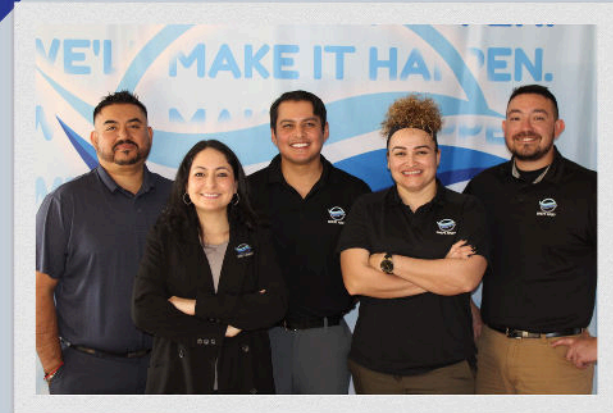
## Cast

**Snow Queen/Marzipan Lead**.....Lizzie Lewallen  
**Snow King**.....Gavin Frangenberg  
**SnowFlakes**.....Ella Dacus, Annabelle Escue, Adalai Weeks, Luci Young, Mary Allen, Chloe Viala, Jessica Maddox, Ashlyn Burns, Lillian Escue, Alexis Parsons  
**SnowFlurries**.....Chandler King, Jane Myers, Maddie Duncan, Kinley Gillean, Clara Kelly, Lily Martin  
**Angel Queen**.....Jacinda Cribbs  
**Little Angels**.....Etta Haynes, Liv Myers, Mabry Young, Charlotte Rogers, Harper Overley, Nora Kiriazis, Avalynn Rogers  
**SugarPlum Fairy**.....Ella Dacus  
**Cavalier**.....Silas Shackelford  
**Marzipan Demi**.....Ashlyn Burns, Annabelle Escue  
**Marzipan Corps**.....Lillian Escue, Rose-Tralee Ellenburg, Alexis Parsons, Abigail Earley  
**Candy Cane Leads**.....Adalai Weeks, Gavin Frangenberg  
**Candy Canes Corps**.....Kelsey Gillean, Madison Herget, Nora Klasky, Emmy Claire Rogers  
**Coffee**.....Jessica Maddox, Silas Shackelford  
**Chinese Tea**.....Chandler King, Maddie Duncan, Jane Myers, Clara Kelly, Briana Jacobs  
**Mother Ginger**.....Elizabeth Fairhead  
**Polichinelles**.....Mabry Young, Amelia Palmer, Lila Klasky, Sonnet Hicks, Clairra Ewald, Leighton Harris, Kinley Gillean, Cora Boves  
**Dew Drop Fairy**.....Mary Allen  
**Flower Princesses**.....Annabelle Escue, Luci Young  
**Flowers**.....Scarlett Gibson, Abigail Earley, Kelsey Gillean, Rose-Tralee Ellenburg, Nora Klasky, Jacinda Cribbs, Lillian Escue, Briana Jacobs, Alexis Parsons, Millie Nowlin  
**Rosebuds**.....Ivy Taylor-McDaniel, Charlotte Harrington, Everleigh Moyer, Lottie Lusby, Brantley Stocking, Audrey Rollings, Rebekah Stansbury, Ella Avery

## AD



SWEPT AWAY



Commercial • Industrial  
Medical • Educational  
Cleaning  
Give us a call for your free  
estimate!

(870) 340-8533

[sweptawayjanitorial.com](http://sweptawayjanitorial.com)



TALK BUSINESS & POLITICS





What an honor and privilege it has been to serve as director for The Nutcracker Ballet 2024. To be in this role has truly been a dream and goal of mine for many years. To have the ability to create and add to a story that is so special to me is such a gift. I am so beyond thankful to everyone who has entrusted me with this role. My vision from the start of this show has been to highlight the beauty and elegance of each character. Not only that, but to challenge our dancers to tell this story with class and grace. I want the story to come to life and leave each person impacted. The Nutcracker is something that has changed my life for the better because of the community that is created through it. The friendships and relationships formed through telling this story is something so special and I hope that is able to shine through on the stage. To all the cast members and crew, I am so proud of each of you. Thank you for dedicating your time and talent to this story. Each cast/crew member plays such a vital role in telling this story and I am so grateful to have the opportunity to lead you all. To all the chaperones and volunteers, this is a show that takes a village. None of this would have happened without each of you. Thank you from the bottom of my heart for all you have done. The Lord continues to remind me daily of the importance of community. We have a Father in Heaven who provides each of us with incredible opportunities to surround ourselves with people who pour into us and build us up. And that is what being a part of the Nutcracker means to me. I hope from this show you are able to see the goodness of the Lord shining through. I hope everyone has a very restful holiday season and a very merry Christmas!

I love you all, thank you all for supporting me in this process  
Ms. Izzy Viala

## Special Thanks

**Emma King:** Would not want to do this show with anyone else! Thank you for the joy, laughter, dedication, creativity, and support you have brought to this show. This show would not have happened without everything you do! You are such a gift in my life and I have been so grateful for this season with you!

**LeeAnn King:** My mentor, teacher, and one of my biggest supporters. Your guidance and mentorship has been a blessing that I am so thankful for. Getting to learn from you is a privilege and I have nothing but respect for you. Thank you for walking through this journey with me and always picking up my calls or being ready to counsel me! Would not be here without you! Love you!

**Heather Driscoll:** The work you do never ceases to amaze me! Thank you for supporting my vision and helping to make all my dreams come to life! You are nothing but wonderful and I am so beyond blessed to have been able to work with you! What ever would I do without you!

**Kristi Viala, Charlotte Dickson, Norman Dickson, Chris Viala and Mandy Young:** My family, biggest supporters, and encouragers. Can with my whole heart say I would not be here without the love and guidance I have received from each of you. Thank you all for being so willing to jump in and help with anything and everything I needed! You are some of the most precious people to me! I love you all!

**Joe Carr, James Rich, and Anna Ganong:** Thank you for all your work in making my visions for this show come to life. Your creativity and hard work does not go unnoticed. I am so thankful for how dedicated each of you have been in this whole process!

## AD

### AFTER 36 YEARS OF HELPING CLIENTS BUILD & MARKET THEIR BRANDS, WE HAVE:




Conducted more than **37,000** brainstorming & creative meetings

Enjoyed over **707,000** pieces of various chocolates, candies & confections 



Filmed more than **14,000** hours of video

Ordered over **61 MILLION** pages of printed materials 



Created online content generating more than **113 MILLION** impressions, views, visits, likes & clicks



Hosted over **5,500** client & prospect lunches

Placed broadcast ads reaching more than **189 MILLION** audience members 



Written more than **12 MILLION** words of copy

Consumed in excess of **442,000** cups, bottles, cans & glasses of coffee, water & soft drinks 



the solutions group

[solutions.marketing](http://solutions.marketing)

CME is proud  
to support the

ARTS

**CMEinc.**  
PEDIATRIC THERAPY



Dear Ella,

It's been a joy to watch you grow into a beautiful dancer and person that we love and respect.

We're overjoyed to watch you as dance the role of the Sugar Plum Fairy in your last Nutcracker on stage. Enjoy every minute!

With all our Love,  
Momma, Dad, Nick, Megan, Jack, Max  
Timothy, Mikah & Gran

Mabry,

You are brave, graceful, and bring so much joy to those around you, especially while watching you on stage! We are excited to see you in two roles this year! Congrats on being a Little Angel and a Polichinelle! Shine bright sweet girl!

Love,  
Mommy and Daddy

Dear Cora,

We are so proud of you and so happy to see you dance in the Nutcracker. You always shine on and off the stage.

We love you!  
Mama, Papa, and  
Demetri

To our Snow Queen,

Lizzie, we are so incredibly proud of you and your dedication to ballet. You bring such artistry, personality, and joy to the stage every time you dance. In a word... outstanding!

We love you,  
Mom, Dad, Kat, Nannie, Nana, and Doc

Sweet Juniper,

We Love Watching you tell your stories through dance. We enjoy seeing you blossom as a dancer. You make us so proud. "Let them praise his name with dancing..." Psalms 149:3

Mommy, Daddy, sister, and Brothers  
Love you very much

Briana,  
you are the light of our lives. We are so proud of the young lady you are. May you keep Jesus near every day.

Love Mom, Nana,  
Poppa and Bubba

Kinley & Kelsey,

You have put in so much hard work this year and I am so very proud of you both!  
I love you very much!

Love,  
Mom

## Stage Notes

Madalyn,  
We are so proud of all your hard work and dedication! We can't wait to watch you bring Clara to life on the stage! We love you!  
Mom, Dad, and Rebekah

Jacinda,  
So proud of you! For 13 years, you have pursued your dream of being a ballerina. Although this will be your last Nutcracker performance we will always have the memories. Shine bright our Angel Queen!

Love,  
Grandpa, Meme, and Gaga

Jacinda,  
One of my greatest joys was watching you perform on stage. This year and several past years I have watched from Heaven. It truly is the best seat in the house.

Love,  
Your Popa

Chloe,  
We are so proud of you! Enjoy every moment of this! We love watching you dance!

Love,  
Your Popa

Maddie,  
We are so proud of your hard work on this show. We love watching you dance! Keep smiling and keep dancing!

Love, Daddy,  
mommy, and Allie

Danielle,  
We are so excited to watch you shine as Fritz and an Angel! We are so proud of you and love you with all our hearts!

Love, Mom & Dad

Claira,  
We Love you very much and are so happy for all your accomplishments. We are all so very proud of you!  
With Love, Mama & Dad,  
& all your family

Dear Callie,

It is such a joy to watch you grow!

We Love You!

AD



**Lost  
Pizza  
Co.**



906 Southwest Dr. Suite A  
Jonesboro, AR 72401

Mon-Thu: 10AM-10PM  
Fri-Sat: 10AM-11PM  
Sun: 11AM-9PM

(870) 520-6227

## **Our Performers Appreciate Your Best!**

Late arrivals must wait at the back of the house until a scene change.

The videotaping or other video or audio recording of this production is strictly prohibited.

Turn your cell phones OFF.

If you need to leave your seat, please wait for a scene change if possible.

In case of an emergency, exits are located in the front and back of the auditorium.

Restrooms are located on the mezzanine and in the lobby.

If you're not saving this playbill as a keepsake, please give it to a staff member or leave it at the Box Office after the performance.

Please be respectful of everyone's choices as we've all chosen to be here in community.

**Thank you!**

## Foundation of Arts Staff

Joe Carr  
Alyssa Cooper  
Aubrey DeFries  
Stephanie Epps  
Anna Ganong  
Kelly Kelley  
Jillian Laboy  
Meridith Pierce  
James Rich

## Board of Directors

Dana Kelley / Maranda Nichols / Russ Pierce / Rob Spencer

## Committees

### *Personnel & Education*

Lesle Allen / Rebecca Orr / Russ Pierce / Janea Spades

### *Finance*

Doug Maglothin / Rob Spencer

### *Development & Advocacy*

Hans Hacker: Advocacy Chair

Lorenzo Balderas / Maranda Nichols / Rebecca Orr / Nancy  
Owens

### *Nominating*

Lesle Allen / Maranda Nichols

### *Governance*

Dana Kelly / Maranda Nichols / Janea Spades

## Arts Center Instructors & Assistants

Aaliyah Spengler	Lizzie Lewallen	Maranda Nichols
Addie Escue	Isabel Viala	Mary Leigh Allen
Anna Ganong	Jennifer Carty	Matt E. Ball
Annie Clark-Roberts	Jessica Maddox	Paulette Watson
David Mason	Kasen Erickson	Shawna Mann
Erika Parker	LeeAnn King	Angela Castro
Madalyn Stansbury	Emma King	Adalai Weeks
		Annabelle Escue

AD



## Chicken Salad Chick *supports* The Foundation of Arts!

[@jonesborochickensaladchick](https://facebook.com/chickensaladchickjonesboro)



**allen**  
**ENGINEERING**  
 CORPORATION

**A Proud Supporter of the  
 Arts in Our Community**

**TO THOSE WHO ENRICH  
 OUR LIVES THROUGH  
 THE PERFORMING  
 ARTS, WE OFFER A  
 STANDING OVATION.**



[WWW.ALLENENG.COM](http://WWW.ALLENENG.COM)



870.236.7751



PARAGOULD, AR

- We believe that engaging in the arts grows people and unites community
- We help people, and each other, learn discipline, teamwork, creativity, and focus through arts experiences - which arms them for success in any field
- We provide disciplined creative arts study and experiences trying our best to enable everyone to learn, regardless of their ability to pay
- We are a place for children and adults to participate in goal-oriented arts-study, in a non-competitive and technique-based environment
- We serve at least 500 families per week through arts education, theatre, and outreach activities
- We offer community theatre with ten different productions per year including The Nutcracker Ballet, musical theatre, and children's theatre
- We stand alone as an arts organization in Northeast Arkansas that provides live theatre at relatively low ticket prices for thousands of patrons each year—and a Pay What You Can performance for each show so that everyone can grow from live theatre
- We work with adults and children with disabilities through the arts, allowing them the opportunity to perform annually on stage
- We bring an annual count of 65,000 trips into downtown Jonesboro for our community
- We need your support—ticket sales and class tuition support only about half of what it takes to serve Northeast Arkansas and the more than 20,000 people we positively affect annually
- WE ARE YOUR COMMUNITY!

Support for The Foundation of Arts is provided, in part, by the **Arkansas Arts Council**, an agency of the Department of Arkansas Heritage, and the National Endowment for the Arts.

Funding for advertising and promotion of The Foundation of Arts, its programs, and its events is provided, in part, by **The Advertising and Promotions Commission of Jonesboro**.

The Foundation of Arts, Forum Theater and The Arts Center are licensed under federal law by **SESAC, Inc.**  
55 Music Square East  
Nashville, TN 37203.

The Foundation of Arts, Forum Theater and The Arts Center are licensed under federal law by **BMI, Inc.**  
10 Music Square East  
Nashville, TN 37203.

The Foundation of Arts, Forum Theater and The Arts Center are licensed under federal law by ASCAP.  
2675 Paces Ferry Road, SE, Suite 350  
Atlanta, GA 30339.

The Foundation of Arts is a member of **Jonesboro Regional Chamber of Commerce**, American Association of Community Theatre, Arkansas Community Theatre Association, Americans for the Arts, Association for Fund Raising Professionals, and Arkansas Coalition for Excellence.

This performance has been legally licensed and all associated rights and royalties have been paid in full by The Foundation of Arts. Under strict penalty of law (punishable by steep fines, revocation of license, and/or imprisonment), no part of this production, nor any implications or representations of this production, can be reproduced for public, private, profitable, charitable, or other purposes.



## Proudly Supports The Arts

*"Without art, the crudeness  
of reality would make the  
world unbearable."  
-George Bernard Shaw-*



## Our Performers Appreciate Your Best!

- Late arrivals must wait at the back of the house until a scene change.
- The videotaping or other video or audio recording of this production is strictly prohibited.
- Turn your cell phones OFF.
- If you need to leave your seat, please wait for a scene change if possible.
- In case of an emergency, exits are located in the front and back of the auditorium.
- Restrooms are located on the mezzanine and in the lobby.
- If you're not saving this playbill as a keepsake, please give it to a staff member or leave it at the Box Office after the performance.
- Please be respectful of everyone's choices as we've all chosen to be here in community.

### Northeast Arkansas' only local dance apparel COMPANY



**dance shoes**  
Ballet · Tap · Jazz  
Contemporary



**APPAREL**  
LEOTARDS · TOPS  
BOTTOMS · DRESSES



**ACCESSORIES**  
BOWS · EARRINGS  
TIGHTS · BAGS



GETONPOINTE.DANCE  
870.926.1320  
2810 E. Highland Dr.



If you'd like to go paperless—The FOA wants to help!  
Scan one of the QR codes in the lobby for a digital  
version of the Playbill.



MATT SILAS ARCHITECT



212 EAST WASHINGTON AVE.  
JONESBORO, AR 72401



(870) 268-0500



MATTSILASARCHITECT.COM

**The Foundation of Arts and the City of Jonesboro are proud to partner in improving the Arts in Northeast Arkansas!**



## Thank You to our Generous Donors!

### ASSOCIATES (\$250+)

Allen, Eleanor  
Langley, Sharon Spence  
McDaniel, Scott & Taura  
Haney, Faye  
Watkins, Brent and Patricia  
Pierce, Judy  
American Online Giving Foundation, Inc.  
Schaeffer, Mike and Lynn  
Puryear, Jeffrey and Shannon  
Adcox, Jimmy

Leasure, Kristi  
Rahrle, Linda  
Balderas, Lorenzo and Erika  
Gonzalez, April Bowman  
Holmes, Paul and Tommie  
Turner, Frankie and Lisa  
Bowman, Dr. and Mrs. Robert  
Yates, Robin M.  
Stallings, Michael & Sheila  
Clements, William and Frances Malpezzi

### FRIENDS(249 ↓)

Smith, Kirby  
Owens, Sarrah  
Maloney, Stephanie  
Melton, Bud and Nancy  
The Medicine Shoppe  
Johnson, Michael or Sandra  
Cato Pet Hospital  
Anonymous6  
Lybolt, Robin  
Nunnally, Lauren  
Anonymous5  
Patteson, Carter  
Frangenberg, Erin  
Washington, Gary  
Cottam, Charles  
Smith, Beverly  
Cutler, Larry and Ann  
Kary, Jill  
Weeks, Hatton  
Carter, Cara  
Walker, Maria  
Baker, Darrin

Allen, John and Caryn  
Nisenbaum, Louis and Cathi  
Spades, William and Janea  
Goad, Bonnie  
Young, Mark and Mitzi  
Defries, Aubrey  
Quinn, Johanna  
Wheeler, Mary J.  
Moore, Randy and Kim  
Sharp Financial Services, Inc.  
Glascoock, Patricia  
Anderson, Jeff & Shelly  
Burrell, Henry  
Mills, Lindsey  
Ramirez, Pedro  
Holbrook, Dave  
Salo, Jennifer  
Coker, Sarah  
Long, Julie  
DeWitt, Carrie  
Ross, Linda  
The Benevity Community Impact Fund

## Supporting the FOA

### Make a financial gift:

Scan the QR code or visit [foajonesboro.org/giving](http://foajonesboro.org/giving) to make a one-time or recurring gift. Every donation is valuable in sustaining our organization and helping us create more opportunities for our community to experience the arts.



### Donate an item from our **WISHLIST**:

- 2 High-Back Executive Leather Office Chairs
- 8 matching Mid-Back Mesh Task Chairs
- RUBERMAID High-Capacity Cleaning Cart stocked with supplies
- 8 LIFETIME 8-foot rectangle folding table(s)
- 10 LIFETIME 6-foot round folding table(s)

### We always welcome **donations** of...

- Non-slip hangers
- Large pieces of un-sewn fabric for costume shop
- 8-foot dimensional lumber (2x4s, 2x6s, 1x4s, 1x3s, 1x2s)
- 2-inch paint brushes
- Paint rollers and covers
- Art Supplies: acrylic paints, canvases, foam boards, sketch pads, etc.
- Office Supplies: post-it notes, ink pens, etc.

### Support us while you **SHOP**:



Log in to your account at [Kroger.com](http://Kroger.com).  
Locate the section titled Community Rewards.  
Search "Foundation of Arts" (organization #WP291). Shop as normal and the FOA gets a donation!

## Thank You to our Generous Donors!

### **STARS (\$20,000+)**

Parker, Don and Lynn

A & P Commission

Young, Joe Clay and Pam

Herget, Ted and Amanda

Arkansas Arts Council

### **CHAMPIONS (\$10,000+)**

Allen Engineering, Inc.

Tedder, Barry and Lisa

St. Bernards Healthcare and Medical Group

Swept Away

Meyering, MG/Ferguson, Conley

Macon, Nikki

Howard, Don

Smith, Shane

Pulliam, Kevin and Kristi

### **PARTNERS (\$5,000+)**

Pierce, Russ and Meridith

Ritter Communications

First Community Bank

NEA Baptist Clinic

Arkansas Community Foundation

Owens, Nancy

Parikh, Mona and James King

Nichols, Maranda

First National Bank

Parikh, Mona and James King

Cooper, Tim and Candace

Hytrol Conveyor Company, Inc.

Memphis Travel

First Horizon Bank

### **ENTHUSIASTS**

#### **(\$2,500+)**

Arvest Bank

Arvest Bank Foundation

Signature Bank

Carr, Joe & Lauryn

City of Jonesboro

Hoffman, Matt and Courtney

Burns, Steve and Teresa

Wenger, Alyssa

Kueter, Diane

First Security Bank

Dacus, Max & Jennifer

## Thank You to our Generous Donors!

### **ADVOCATES (\$1,000+)**

Exchange Club of Jonesboro

Listenbee, Ryan and Kelli

Dacus, Mary

Fahlberg, Zach and Amanda

Polk, Michael

Deacon, Dorine

Hall, Ray and Barbara

Shannon, Claudia

Yarbrough, Lynn

Daniel, David

Miller, Charles and Linda

Moore, Ryan and Angela

KASU Radio

Orr, Wally and Rebecca

Watson, Jeremy and Ashley

Kelley, Dana and Kelly

Williams, Allen and Danna

Wiggins, Mark and Sondra

NEA Baptist Hospital Auxiliary

Inboden, Mary Hollis

Miller, Kevin

Holloway, Bob and Margaret

Mahan, Mitchell

Care Hospice, Inc.

Dierksen Hospice

Smith, Mark

Corinth Coca Cola Bottling Works, Inc.

### **SUSTAINERS (\$500+)**

Native Brew Works

United Cerebral Palsy of AR, Inc.

Spades, Janea

Ace One Technologies, LLC

Max Velocity Baseball, LLC

Escue, Jeremy and Amanda

Sammons, Nathan

Freeman, John and Lois

Lambert, Patricia

Childers, Chris and Judy

Gateway Sight and Sound

Way, Diana

Inboden, Kim and Toni

Sloan, Kitty

Kroger