



The Foundation
Of Arts

A detailed black and white illustration of a wrought-iron gate, featuring intricate scrollwork and floral patterns. The gate is partially open, revealing a glimpse of a garden behind it. The illustration is positioned on the left side of the page, framing the title.

Secret Garden

Spring Version

Our Performers Appreciate Your Best!

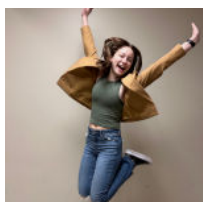
- Late arrivals must wait at the back of the house until a scene change.
- The videotaping or other video or audio recording of this production is strictly prohibited.
- Turn your cell phones OFF.
- If you need to leave your seat, please wait for a scene change if possible.
- In case of an emergency, exits are located in the front and back of the auditorium.
- Restrooms are located on the mezzanine and in the lobby.
- If you're not saving this playbill as a keepsake, please give it to a staff member or leave it at the Box Office after the performance.
- Please be respectful of everyone's choices as we've all chosen to be here in community.

Thank you!

If you'd like to go paperless—The FOA wants to help!

Scan one of the QR codes in the lobby for a digital version of the Playbill.

About Us



OUR MISSION

To engage people toward positive personal change through creativity as we enhance the quality of life of our community through the arts.

OUR VALUES

Growth & Creativity
Excellence & Quality
Access & Opportunity
Community & Individuality
Stewardship & Responsibility

GET INVOLVED

Attend a performance
Audition for a show
Volunteer to work a show
Participate in a fundraiser
Refer your friends
Make a donation
Take a class

STAY IN THE LOOP



Creative Team

Maranda Nichols, Director



Maranda Nichols has been teaching Drama here at the FOA since 2010. She has always enjoyed participating in theatre productions. She began performing in church productions as a child then worked in community theatre and high school at Nettleton High School productions as a teenager. She then performed in parades and shows at Walt Disney World, as well as numerous productions throughout the years. She has directed Disney's Camp Rock: The Musical and Schoolhouse Rock, Live!, The Music Man, Frozen, Jr., and Anastasia, to name a few. She also serves as the Secretary on the Board of Directors for the Foundation of Arts. She has a BS in Biology with a minor in Honors Interdisciplinary Studies from UCA, a Master's in Public Health from A.T. Still University and a Masters in Physician Assistant Studies from Harding University. She has worked for St. Bernard's Occupational Health Partners for 12 years. She is a member of FUMC Jonesboro. She also works to continue her education by taking dance classes and workshops here at the FOA.

Emily Strode, Assistant Director



Emily has been involved with the FOA since 2007. In addition to being seen onstage she has also worked behind the scenes on many productions serving as costumer, assistant director, and director. Emily taught high school Ridgefield Christian School and founded their theatre department in 2014. She now works for Jonesboro Public Schools. Most recently she was seen onstage in the FOA productions of Sweeney Todd, The Music Man, and Hallelujah Girls. She wishes to thank you all for supporting the arts in NEA and hopes you will enjoy "The Secret Garden."

Jenny Westmoreland, Costumer



Jenny Westmoreland works as a special education teacher at Valley View Junior High. She has two daughters, Eleanor and Evie, with her husband, John. Jenny participated in her first play in 2010. Since then, she has performed in numerous productions here at the Foundation of the Arts. She assistant directed Beauty and the Beast, Matilda, Shrek Jr., Chitty Chitty Bang Bang, House of Villains, It's a Wonderful Life, Frozen Jr, Music Man, Anastasia, and Miracle on 34th Street. She also costumed House of Villains, Music Man and Hallelujah Girls. In her spare time, she is a troop leader for her daughters' Girl Scout Troop and enjoys spending time with her family. Her favorite holiday is Halloween and her family designs fun costumes every year. Some of her favorite costumes to create have been The Greatest Showman cast, Loki Variants, Winnie Sanderson, Sleeping Beauty, Wednesday Addams and most recently Elphaba and Glinda. Jenny has passed her love of theater on to her girls who are in tonight's production.

Creative Team



Joe Carr, Technical Director/Set Design

Joe has served as Technical Director and Scenic & Lighting Designer for more than 60 productions. Besides enhancing the quality of FOA productions, Joe is no stranger to the stage himself and has occasionally served as music director for a handful of productions. He is a musician and songwriter and has even had the pleasure of contributing original music to complement stories told on stage. Joe serves the FOA full-time as Creative Director leading our financial and technical operations



Anna Ganong, Musical Director/Scenic Painter

Anna graduated with BSE Mathematics at Arkansas State University. She started her volunteer journey at the FOA in 2009. She has performed in 19 FOA productions and has assisted with scenic art for several others. Anna has honed her skills, not just as a performer, but also as a mentor to younger members of the organization. Her dedication to sharing her love of theater and mathematics has inspired many, encouraging them to explore the intersection of creativity and logic.



James Rich, Lighting Design/Construction

James graduated Southern Arkansas University in the year of 2022. He moved to Jonesboro in 2023 and found The Foundation of Arts not long after his arrival. James has served as Technical Assistant for a total of 20 Productions! One of his favorite sets that he worked on was Charlotte's Web.

Run Crew

Sound Operator: Joe Carr

Light Operator: Matt Taylor

Spotlight Operators: Madalyn Stansbury & Klara Erickson

Stage Manager: Emily Strode

Assistant Stage Manager: Kara Anderson

Fly Rail: Kilee Erickson

About This Show

The Secret Garden focuses on the story of young Mary Lennox, orphaned in India, who travels to England to live with her reclusive uncle Archibald Craven, where she discovers a locked, overgrown garden. Through her exploration of the garden with the help of the local boy Dickon, Mary begins to heal herself and those around her, particularly her sickly cousin Colin, as they bring the garden back to life.

ACT 1:

Prelude

There's a Girl

The House Upon the Hill

Magic Chant

Skipping Song - Martha

Skipping Song - Mary

It's a Maze

The Girl in the Valley

Skipping Song - Mary II

Show Me The Key

The Girl I Mean to Be

I Heard Someone Crying

Act One Finale

-

Intermission

-

ACT 2:

Lily's Eyes

Wick

Come to My Garden

Come Spirit Come Charm

Come Spirit Come Charm - Tag

Mary's Tantrum

Hold On

Letter Song

How Could I Ever Know

In The Garden

Finale Ultimo

The Cast

Mary Lennox Karleigh Anderson

Archibald Craven Gary Edwards

Dr. Neville Craven Cody Duncan

Colin Craven Kayden Meredith

Dickon Gabriel Rodriguez

Martha Kasen Erickson

Mrs. Medlock Kaylin Taylor

Mrs. Winthrop Kate Huss

Lily Craven Anna Ganong

Ben Weatherstaff Colton Bruff

Lt. Peter Wright Joshua Meredith

Young Lily/Robin Maddie Duncan

Young Rose/Robin Abigail Earley

Albert Lennox Michael Carl

Rose Lennox Emily Bowman

Cast

Servants:

Marley Copeland

Abigail Trebilcock

Jayden Bolton

Sophia Cazares

Spirits:

Mila Huesgen

Carter Cavaness

Elleigh Anderson

Cacie Edwards

Drake Lindsey

Ellie Gonzalez

Silas Parks

Ava Inman

Readers:

Fariss Maners

Scarlett King

Jana Caang

Eleanor Westmoreland

Alexa Vail

Evie Westmoreland

Samantha Robinson

Eviegale McDaniel

Anna Norris

Gabriela Varela-Polio

Reece Rupard

Maddie Maners

Oakley Sitz

Brynlee Tibbs

Directors Note

I have truly enjoyed creating this production. What an excellent way to combine all the reading I remember as a child and show the world the pictures I could see from the words on the page, I guess even at six I was a director. I saw stories in pictures and could see exactly how a scene would happen from the words the author wrote on a page. The song in the preshow is a dear song to me because it expressed how I felt about reading and how the world would melt away and all that mattered was the world created by the story. I remember crying when I finished a book because beloved friends would no longer be visiting me and taking me on their adventures. Reading books is so different for adults. I remember so well, "and they lived happily ever after..." funny thing is they really didn't. Most stories we read teach a bigger lesson of living with and choosing joy in the world that you've been given. Stories don't teach us happily ever after, but they do teach us to live optimistically and to keep seeing the world in possibilities. Mary does not get back all that she lost. She still lives in a different country and in a different culture from where she had been raised. She's lost everything, except her spirit. This story is about healing spirits and how when we can heal our spirits, we can then function to heal other spirits. A very timeless idea told in a children's story. There is no "happily ever after", but I believe Mary would say that she is happy, but in a different way. She still grieves her losses but is able to allow loss to sustain her rather than weigh her down, perhaps the noblest of traits in a heroine. I hope you enjoy this telling of a classic novel and embrace the narrative and honestly, choose joy.

Be happy, be healthy, read books!

*- Maranda
Nichols*



Special Thanks

John Westmoreland

Samantha Robinson

Suzy Treece

Cody Duncan

Evie Westmoreland

Eleanor Westmoreland

Nicole Scott

Victoria Meyers

Reece Rupard

Wendeth Khan

Kara Anderson

Deborah Carl

Michael Carl

Emily Bowman

Manila Museum

Elleigh Anderson

Mila Huesgen

Abigail Earley

Karleigh Anderson

Gabriela Varela-Polio

Gabriel Rodriguez

Marley Copeland

Gary Edwards

Cacie Edwards

LeeAnn King

Ava Inman

Maggie Moyer

Kaylin Taylor

Fariss Maners

Amy Shumate

Mary Stanley

Stage Notes

Samantha,
We are so proud of you and
love you very much!
Break a leg!
Mom and Brannon

Elleigh,
You are so fun to watch onstage.
You wanted to be a ghost and
you are rocking it! You always
have the eye to see through
the weeds to see the beauty.

Karleigh,
We are so proud of the hard work and
dedication you have put into being on
the stage. You make a lovely Mary
Lennox and it has been fun watching
you come into that character and bring
her to life! If you look the right way,
you can see that the whole world is a
garden. It has been our honor to watch
you grow!

Ellie,
Sharing your talent for singing
and dancing in theater has
brought us so much joy! We admire
your determination and are truly
impressed by all that you've
accomplished.

With love,
Your parents and brother

Dear Drake,
Congratulations on your first play!
Mom and Dad are so proud of you!

Love,
Mom, Dad, Abby

AD

Lost Pizza Co.



906 Southwest Dr. Suite A
Jonesboro, AR 72401

Mon-Thu: 10AM-10PM
Fri-Sat: 10AM-11PM
Sun: 11AM-9PM

(870) 520-6227

AD



Chicken Salad Chick
supports
The Foundation of Arts!

facebook.com/chickensaladchickjonesboro
@jonesborochickensaladchick

AD



allen[®]
ENGINEERING
CORPORATION

**A Proud Supporter of the
Arts in Our Community**

**TO THOSE WHO ENRICH
OUR LIVES THROUGH
THE PERFORMING
ARTS, WE OFFER A
STANDING OVATION.**



WWW.ALLENENG.COM



870.236.7751



PARAGOULD, AR

KASU

91.9FM • KASU.ORG

Proudly Supports The Arts

*"Without art, the crudeness
of reality would make the
world unbearable."
-George Bernard Shaw-*



Northeast Arkansas' only
local dance apparel COMPANY



dance shoes
Ballet · Tap · Jazz
Contemporary



APPAREL
LEOTARDS · TOPS
BOTTOMS · DRESSES



ACCESSORIES
BOWS · EARRINGS
TIGHTS · BAGS



GETONPOINTE.DANCE
870.926.1320
2810 E. Highland Dr.



ON POINTE

AD

The Foundation of Arts and the City of Jonesboro are proud to partner in improving the Arts in Northeast Arkansas!



YEAR-ROUND CLASSES

REGISTER TODAY

Online, by phone, or in person!

www.foajonesboro.org

(870) 935-2726

Box Office Hours: Tuesday-Friday 10am-6pm

Enrollment in a weekly class requires a one-time registration fee of **\$80**

MEMBERSHIPS

STEPPING STONES - \$70/MONTH

ONE CLASS - \$80/MONTH

TWO CLASSES - \$150/MONTH

THREE OR MORE CLASSES - \$210/MONTH

At the FOA, we believe the arts should be accessible to everyone, regardless of budget. We offer Tuition Assistance through tuition waiver and/or work study packages tailored to each family. To apply, email stephanie@foajonesboro.org.

DANCER LEVEL REQUIREMENTS

Beginning-Level Ballet- at least 1 year of previous ballet experience, teacher placement required. 1 technique class plus one supplemental class required weekly.

Intermediate-Level Ballet- at least 2 years previous ballet training, teacher placement required. 2 ballet technique classes plus one supplemental class required weekly.

Advanced-Level Ballet - at least 3 years previous ballet training, teacher placement required. 3 ballet technique classes plus one supplemental class required weekly.

Make a financial **gift**:

Scan the QR code or visit foajonesboro.org/giving to make a one-time or recurring gift. Every donation is valuable in sustaining our organization and helping us create more opportunities for our community to experience the arts.



Donate an item from our **WISHLIST**:

- 2 High-Back Executive Leather Office Chairs
- 8 matching Mid-Back Mesh Task Chairs
- RUBBERMAID High-Capacity Cleaning Cart stocked with supplies
- 8 LIFETIME 8-foot rectangle folding table(s)
- 10 LIFETIME 6-foot round folding table(s)

We always welcome **donations** of...

- Non-slip hangers
- Large pieces of un-sewn fabric for costume shop
- 8-foot dimensional lumber (2x4s, 2x6s, 1x4s, 1x3s, 1x2s)
- 2-inch paint brushes
- Paint rollers and covers
- Art Supplies: acrylic paints, canvases, foam boards, sketch pads, etc.
- Office Supplies: post-it notes, ink pens, etc.

Support us while you **SHOP**:



Log in to your account at Kroger.com.
Locate the section titled Community Rewards.

Search "Foundation of Arts" (organization #WP291). Shop as normal and the FOA gets a donation!

Thank You to our Generous Donors!

STARS (\$20,000+)

Parker, Don and Lynn
A & P Commission
Young, Joe Clay and Pam
Herget, Ted and Amanda
Arkansas Arts Council

CHAMPIONS (\$10,000+)

Allen Engineering, Inc.
Tedder, Barry and Lisa
St. Bernards Healthcare and Medical Group
Swept Away
Meyering, MG/Ferguson, Conley
Macon, Nikki
Howard, Don
Smith, Shane
Pulliam, Kevin and Kristi

PARTNERS

(\$5,000+)

Pierce, Russ and Meridith
Ritter Communications
First Community Bank
NEA Baptist Clinic
Arkansas Community Foundation
Owens, Nancy
Parikh, Mona and James King
Nichols, Maranda
First National Bank
Cooper, Tim and Candace
Hytrol Conveyor Company, Inc.
Memphis Travel
First Horizon Bank

ENTHUSIASTS

(\$2,500+)

Arvest Bank
Arvest Bank Foundation
Signature Bank
Carr, Joe & Lauryn
City of Jonesboro
Hoffman, Matt and Courtney
Burns, Steve and Teresa
Wenger, Alyssa
Kueter, Diane
First Security Bank
Dacus, Max & Jennifer

Thank You to our Generous Donors!

ADVOCATES (\$1,000+)

Exchange Club of Jonesboro
Listenbee, Ryan and Kelli
Dacus, Mary
Fahlberg, Zach and Amanda
Polk, Michael
Deacon, Dorine
Hall, Ray and Barbara
Shannon, Claudia
Yarbrough, Lynn
Daniel, David
Miller, Charles and Linda
Moore, Ryan and Angela
KASU Radio

Orr, Wally and Rebecca
Watson, Jeremy and Ashley
Kelley, Dana and Kelly
Williams, Allen and Danna
Wiggins, Mark and Sondra
NEA Baptist Hospital Auxiliary
Inboden, Mary Hollis
Miller, Kevin
Holloway, Bob and Margaret
Mahan, Mitchell
Care Hospice, Inc.
Dierksen Hospice
Smith, Mark
Corinth Coca Cola Bottling Works, Inc.

SUSTAINERS (\$500+)

Native Brew Works
United Cerebral Palsy of AR, Inc.
Spades, Janea
Ace One Technologies, LLC
Max Velocity Baseball, LLC
Escue, Jeremy and Amanda
Sammons, Nathan
Freeman, John and Lois
Lambert, Patricia
Childers, Chris and Judy
Gateway Sight and Sound
Way, Diana
Inboden, Kim and Toni
Sloan, Kitty
Kroger

Thank You to our Generous Donors!

ASSOCIATES (\$250+)

Allen, Eleanor	Leasure, Kristi
Langley, Sharon Spence	Rahrle, Linda
McDaniel, Scott & Taura	Balderas, Lorenzo and Erika
Haney, Faye	Gonzalez, April Bowman
Watkins, Brent and Patricia	Holmes, Paul and Tommie
Pierce, Judy	Turner, Frankie and Lisa
American Online Giving	Bowman, Dr. and Mrs. Robert
Foundation, Inc.	Yates, Robin M.
Schaeffer, Mike and Lynn	Stallings, Michael & Sheila
Puryear, Jeffrey and Shannon	Clements, William and Frances Malpezzi
Adcox, Jimmy	

FRIENDS(249 ↓)

Smith, Kirby	Allen, John and Caryn
Owens, Sarrah	Nisenbaum, Louis and Cathi
Maloney, Stephanie	Spades, William and Janea
Melton, Bud and Nancy	Goad, Bonnie
The Medicine Shoppe	Young, Mark and Mitzi
Johnson, Michael or Sandra	Defries, Aubrey
Cato Pet Hospital	Quinn, Johanna
Anonymous6	Wheeler, Mary J.
Lybolt, Robin	Moore, Randy and Kim
Nunnally, Lauren	Sharp Financial Services, Inc.
Anonymous5	Glascoock, Patricia
Patteson, Carter	Anderson, Jeff & Shelly
Frangenberg, Erin	Burrell, Henry
Washington, Gary	Mills, Lindsey
Cottam, Charles	Ramirez, Pedro
Smith, Beverly	Holbrook, Dave
Cutler, Larry and Ann	Salo, Jennifer
Kary, Jill	Coker, Sarah
Weeks, Hatton	Long, Julie
Carter, Cara	DeWitt, Carrie
Walker, Maria	Ross, Linda
Baker, Darrin	The Benevity Community Impact Fund



The Foundation
Of Arts

NEW CLASSES ADDED FOR 2025!

BEGINNING ACRO (AGES 7+)

Mondays 4:30-5:30

HIP-HOP (AGES 12+)

Mondays 7:00-8:00

TINY TUMBLERS (AGES 5-6)

Thursdays 5:30-6:30

BEG. BALLET CONDITIONING (AGES 7+)

Thursdays 6:30-7:30

BALLET FOR ADULTS (EXTRA NIGHT!)

Tuesdays 7:30-8:30

foajonesboro.org



MATT SILAS ARCHITECT



**212 EAST WASHINGTON AVE.
JONESBORO, AR 72401**



(870) 268-0500



MATTSILSARCHITECT.COM

AD



**M
N
B**

**MEN N' BLACK
TUXEDOS**

Professional Affiliations

Support for The Foundation of Arts is provided, in part, by the **Arkansas Arts Council**, an agency of the Department of Arkansas Heritage, and the National Endowment for the Arts.

Funding for advertising and promotion of The Foundation of Arts, its programs, and its events is provided, in part, by **The Advertising and Promotions Commission of Jonesboro**.

The Foundation of Arts, Forum Theater and The Arts Center are licensed under federal law by **SESAC, Inc.**
55 Music Square East
Nashville, TN 37203.

The Foundation of Arts, Forum Theater and The Arts Center are licensed under federal law by **BMI, Inc.**
10 Music Square East
Nashville, TN 37203.

The Foundation of Arts, Forum Theater and The Arts Center are licensed under federal law by **ASCAP**.
2675 Paces Ferry Road, SE, Suite 350
Atlanta, GA 30339.

The Foundation of Arts is a member of **Jonesboro Regional Chamber of Commerce**, American Association of Community Theatre, Arkansas Community Theatre Association, Americans for the Arts, Association for Fund Raising Professionals, and Arkansas Coalition for Excellence.

This performance has been legally licensed and all associated rights and royalties have been paid in full by The Foundation of Arts. Under strict penalty of law (punishable by steep fines, revocation of license, and/or imprisonment), no part of this production, nor any implications or representations of this production, can be reproduced for public, private, profitable, charitable, or other purposes.

Why Should I support the Foundation of Arts?

- We believe that engaging in the arts grows people and unites community
- We help people, and each other, learn discipline, teamwork, creativity, and focus through arts experiences - which arms them for success in any field
- We provide disciplined creative arts study and experiences trying our best to enable everyone to learn, regardless of their ability to pay
 - We are a place for children and adults to participate in goal-oriented arts-study, in a non-competitive and technique-based environment
- We serve at least 500 families per week through arts education, theatre, and outreach activities
- We offer community theatre with ten different productions per year including The Nutcracker Ballet, musical theatre, and children's theatre
- We stand alone as an arts organization in Northeast Arkansas that provides live theatre at relatively low ticket prices for thousands of patrons each year—and a Pay What You Can performance for each show so that everyone can grow from live theatre
- We work with adults and children with disabilities through the arts, allowing them the opportunity to perform annually on stage
- We bring an annual count of 65,000 trips into downtown Jonesboro for our community
- We need your support—ticket sales and class tuition support only about half of what it takes to serve Northeast Arkansas and the more than 20,000 people we positively affect annually
- WE ARE YOUR COMMUNITY!

Foundation of Arts Staff

Stephanie Epps

Joe Carr

Meridith Pierce

Anna Ganong

Jillian Laboy

James Rich

Aubrey DeFries

Isabel Viala

Ava Inman

Board of Directors

Dana Kelley / Maranda Nichols / Russ Pierce / Rob Spencer

Committees

Personnel & Education

Lesle Allen / Rebecca Orr / Russ Pierce / Janea Spades

Finance

Doug Maglothin / Rob Spencer

Development & Advocacy

Hans Hacker: Advocacy Chair

Lorenzo Balderas / Maranda Nichols / Rebecca Orr / Nancy Owens

Nominating

Lesle Allen / Maranda Nichols

Governance

Dana Kelly / Maranda Nichols / Janea Spades

Arts Center Instructors & Assistants

Aaliyah Spengler	Lizzie Lewallen	Maranda Nichols
Addie Escue	Isabel Viala	Mary Leigh Allen
Anna Ganong	Jennifer Carty	Matt E. Ball
Annie Clark-Roberts	Jessica Maddox	Paulette Watson
David Mason	Kasen Erickson	Shawna Mann
Erika Parker	LeeAnn King	Angela Castro
Madalyn Stansbury	Emma King	Adalai Weeks
		Annabelle Escue

*Congratulations Everyone
on Your Wonderful
Performance!*

**NEA Baptist Clinic is
proud to sponsor the
Foundation of Arts
The Secret Garden.**



Brannon Treece, MD
Family Medicine
Internal Medicine/Pediatrics

NEA BAPTIST. 

2205 W. Parker, Jonesboro , AR • 870-936-7612 • NEABaptistClinic.org



AD

CME is proud
to support the

ARTS

CMEinc.
PEDIATRIC THERAPY



**AFTER 38 YEARS OF HELPING CLIENTS
BUILD & MARKET THEIR BRANDS, WE HAVE:**



Conducted
more than
37,000
brainstorming
& creative
meetings

Enjoyed over
707,000
pieces of various
chocolates, candies
& confections



Filmed more than
14,000
hours of video

Ordered over
61 MILLION
pages of printed
materials



Created online
content generating
more than

113 MILLION
impressions,
views, visits,
likes & clicks



Hosted over
5,500
client & prospect
lunches

Placed broadcast ads
reaching more than
189 MILLION
audience members



Written more than
12 MILLION
words of copy

Consumed in excess of
442,000
cups, bottles, cans
& glasses of coffee,
water & soft drinks



the
solutions
group

solutions.marketing

AD



Jonesboro



Radio Group®



AD



SWEPT AWAY



Commercial • Industrial
Medical • Educational
Cleaning

Give us a call for your free
estimate!

(870) 340-8533

sweptawayjanitorial.com



TALK BUSINESS & POLITICS

Northeast Arkansas
Outstanding
Business Awards
2024 WINNER



AD



**Keep
Jonesboro
Beautiful**

KEEP AMERICA BEAUTIFUL AFFILIATE

EAB

EAST ARKANSAS BROADCASTERS

NEA SPORTS TALK
95.3
FM/970 AM
THE TICKET

 **95.9**
THE WOLF

101.7
KISS FM

94.1
THE BUZZ
EVERYTHING ROCK

101.3
NEWS TALK
1230
KBTM

THE BIG 107.9
KFIN 

AD



DJA

DOWNTOWN

JONESBORO ALLIANCE

SUPERTINTS GRAPHICS

870-935-7799

VEHICLE WRAP COMPANY

Truck/Van Wraps

Signs

Banners

Logo Design

Fleet Graphics



Before

After



Find us on Facebook
supertintsgraphics

follow us on twitter
supertintsusa



open 6 days!



3212 E. Nettleton Ave. 870-935-7799



Eat. Shop. Play. The local's guide to NEA.



exploremornea.com

f Explore MOR NEA @exploremor_nea

Dacus Mini Warehouses

Since 1977



Available Unit Sizes

5x10

10x10

10x12

10x20

10x30

10x40

12x30

12x40

- ▶ Insurance Available
- ▶ Fenced, 7-Day Access
- ▶ Over 700 Units
- ▶ 24 Hour Supervision

Climate-Controlled
Units Available

870.935.7860

www.dacusstorage.com

1804 West Washington

AD



Outrageously Dependable[®]



Season Sponsors



FUNDED BY JONESBORO
ADVERTISING & PROMOTION COMMISSION

Arkansas
Arts Council

OCCASIONS
Publishing Group

KASU
91.9FM • KASU.ORG

Jonesboro
Radio Group



DACUS MINI WAREHOUSES



935-7799
SUPERINTENDENT'S
GRAB

allen
ENGINEERING
CORPORATION

SOL
UTI
ONS the
solutions
group

EAB
EAST ARKANSAS
BROADCASTERS

Lost
Pizza
Co. 



INTERSTATE
BATTERIES
Outrageously Dependable

