



The Foundation
Of Arts

Disney
Alice in
Wonderland JR.

The title card features a central blue, ornate, scrollwork frame with a golden-yellow border. The text is centered within the frame. The background is a black and white checkerboard pattern that is distorted by a perspective effect, creating a sense of depth and movement. A small '© Disney' watermark is visible in the bottom right corner of the frame.

Our Performers Appreciate Your Best!

- Late arrivals must wait at the back of the house until a scene change.
- The videotaping or other video or audio recording of this production is strictly prohibited.
- Turn your cell phones OFF.
- If you need to leave your seat, please wait for a scene change if possible.
- In case of an emergency, exits are located in the front and back of the auditorium.
- Restrooms are located on the mezzanine and in the lobby.
- If you're not saving this playbill as a keepsake, please give it to a staff member or leave it at the Box Office after the performance.
- Please be respectful of everyone's choices as we've all chosen to be here in community.

Thank you!

If you'd like to go paperless—The FOA wants to help!

Scan one of the QR codes in the lobby for a digital version of the Playbill.

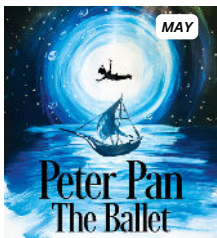
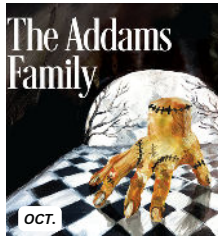
About Us

FOA | The Foundation
Of Arts

Introducing...

OUR 2025-2026 THEATRE SEASON!

Be on the lookout for season ticket packages!



See you soon!

Find show dates, audition info, purchase tickets, and more by visiting our newly redesigned site! @foajonesboro.org



About Us

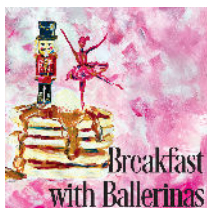
FOA | The Foundation Of Arts

More than just theatre!

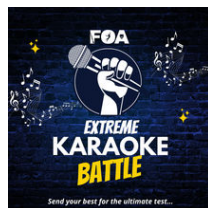
OCTOBER



NOVEMBER



FEBRUARY



APRIL



APRIL



MAY



YEAR-ROUND



“

OUTREACH

LEARNING EXPRESSION THROUGH ARTS PROGRAMMING

EDUCATIONAL ENRICHMENT SERIES

PAY WHAT YOU CAN PERFORMANCES

TUITION ASSISTANCE PROGRAM

AND MORE!

”

Interested in presenting a show or event? Want to learn more about how you can support our outreach? Let's chat!
Contact stephanie@foajonesboro.org

About Us



Entertainment and events every weekend! FREE Admission!
(With the exception of workshops)

Location: 330 S Main St Hours: Thurs-Sat 6-10 Events start @ 7:00

ATTENTION MEMBERS AND GUESTS!

7/3 OPEN for the Slow Roll!

7/4-7/5 CLOSED

7/10 "Game Night Thursday"- Mahjong

7/11 "Acoustic Friday"- Cason Storey

7/12 "Wildcard Saturday"-

Mic Drop: Karaoke

7/17 "Game Night Thursday"- Singo Bingo

7/18 "Acoustic Friday"- Chris DeClark

7/19 "Wildcard Saturday"- Wordplay Cafe:

Theme TBA

7/24 "Game Night Thursday"- Trivia

7/25 "Acoustic Friday"- Ty Stevens

7/26 "Wildcard Saturday"-

*Flashback Flicks: Little Shop of
Horrors, sponsored by Lost Pizza!*

7/31 "Game Night Thursday"- Bunco

8/1 "Acoustic Friday"- Zack Smock

8/2 "Wildcard Saturday"- Workshop:

Social Dancing w/ Briana Larson

Enjoy the entertainment District during Forum shows and join us for the
fun in downtown Jonesboro's newest hangout spot!

Visit foajonesboro.org and find the Stage, Too page to learn more!

Meet the Creative Team for

Disney
Alice in
Wonderland Jr



Dana Bruff, Director

Dana Bruff studied Production Design at the Savannah College of Art and Design, and currently teaches theatre for grades 7-12 at Valley View High School. She has a passion for directing, costume design, and sharing her love of theatre with her students. Some of her recent productions include Shrek the Musical, Sense and Sensibility, The Wizard of Oz, Sweeney Todd, The Little Mermaid, Men on Boats, and Little Women. When she's not in the theatre, she enjoys crafting, swimming, and spending time with her family. Dana is excited to be directing her first FOA production!



Kilee Erickson, Assistant Director

Kilee currently works at St. Bernard's, as well as being very involved in the arts. She started taking classes in 2016 and while she loved being on stage, she became intrigued with tech and working backstage! She has been in over 25 shows at the Forum! She has helped create magic in multiple FOA productions, Godspell, Frozen Jr, Mean Girls Jr, Secret Garden, and Mary Poppins, just to name a few. She loves the work that goes behind the scenes to help create an amazing show! A fun fact about her is she has a hedgehog named, Dill Pickle!



Katy Tarkington, Music Director

Kathryn Tarkington is the Valley View High school Choir Director. She has music directed/directed numerous musicals throughout her professional career including Snoopy the musical, Into the Woods Jr., Frozen Jr., Newsies Jr., Godspell, Dream Girls (assistant director), Annie Jr., Little Women, The Little Mermaid, Shrek, Music Man, Les Miserable school edition, and Little Shop of Horrors. In her free time she enjoys performing at the FOA and has enjoyed doing so for many years and spending time with her family! Mrs. Tarkington has two beautiful children with her sweet husband Xavier; Danielle, who is 9 years old who is also part of the FOA family and does ballet as well as participates in shows, and James who is 9 months old. Mrs. Tarkington can't wait for everyone to hear the beautiful voices of this talented cast and all the hard work they've put into this production in just two weeks!



Nicole Scott, Costumer

Nicole Scott (costume designer) is proud to be working as a member of the creative team for Alice in Wonderland. YAT summer shows are her absolute favorite shows to work on! Nicole began costuming for the FOA in 2017. Since then, favorite productions she's costumed include: Cinderella Jr, Peter Pan, Madagascar Jr, Descendants, Willy Wonka, Freaky Friday, The Nutcracker Ballet, Anastasia, Mean Girls Jr, and most recently, Mary Poppins. Aside from sewing and quilting, Nicole has a passion for reading and loves spending time with her family and pets.

Meet the Creative Team for

Disney
**Alice in
Wonderland JR**



Canon Frangenberg, Assistant Costumer

Canon is the assistant costumer for Alice in Wonderland JR at the FOA. He's helped costume for other shows such as Mary Poppins and Mean Girls JR, while also taking part in both productions. He has a great passion for sewing and designing costumes. It has been so much fun to work on this fantastic show. He would love to thank Mrs. Bruff and Nicole Scott for letting him work on this show and letting him be a part of it



Emma Brown, Choreographer

Emma Brown has been involved in the FOA since she was 3 years old. She has been in over 20 productions, including The Nutcracker ballet. She has choreographed several shows at the FOA, including Mean Girls Jr, Finding Nemo Jr, and Freaky Friday. Emma will be a sophomore at The University of Central Arkansas majoring in Psychology.



James Rich, Set & Lighting Design

James graduated Southern Arkansas University in the year of 2022. He moved to Jonesboro in 2023 and found The Foundation of Arts not long after his arrival. James has served as Technical Assistant for a total of 24 Productions! One of his favorite sets that he worked on was Charlotte's Web. He believes that theater is a powerful medium for storytelling and is committed to using his talents to enhance each narrative told on stage.



Anna Ganong, Scenic Painter

Anna graduated with BSE Mathematics at Arkansas State University. She started her volunteer journey at the FOA in 2009. She has performed in 21 FOA productions and has assisted with scenic art for several others. Anna has honed her skills, not just as a performer, but also as a mentor to younger members of the organization. Her dedication to sharing her love of theater and mathematics has inspired many, encouraging them to explore the intersection of creativity and logic.

Run Crew

Sound Operator: Joe Carr

Light Operator: James Rich

Stage Left Manager: Kilee Erickson

Stage Right Manager: Anna Ganong

Spotlights: Jackson Drew & Raines Pratt

Projections: Vivian Maglothin

About This Show

In this musical adaptation of the classic tale, Alice tries to find her way home after she falls into whole new world of bizarre creatures and curiosities.

The Show

Opening: Alice's Theme

In A World Of My Own

I'm Late

Very Good Advice

Ocean Of Tears/Smallification 2

The Caucus Race

I'm Late (Reprise)

How D'ye Do And Shake Hands

How D'ye Do And Shake Hands (Reprise)

The Golden Afternoon

Adventure Is A Wonderful Thing

The Unbirthday Song (Part 1)

The Unbirthday Song (Part 2)

I'm Late (Reprise 2)

Painting The Roses Red

Painting The Roses Red (Reprise)

Simon Says (Part 1)

Simon Says (Part 2)

The Unbirthday Song (Reprise)

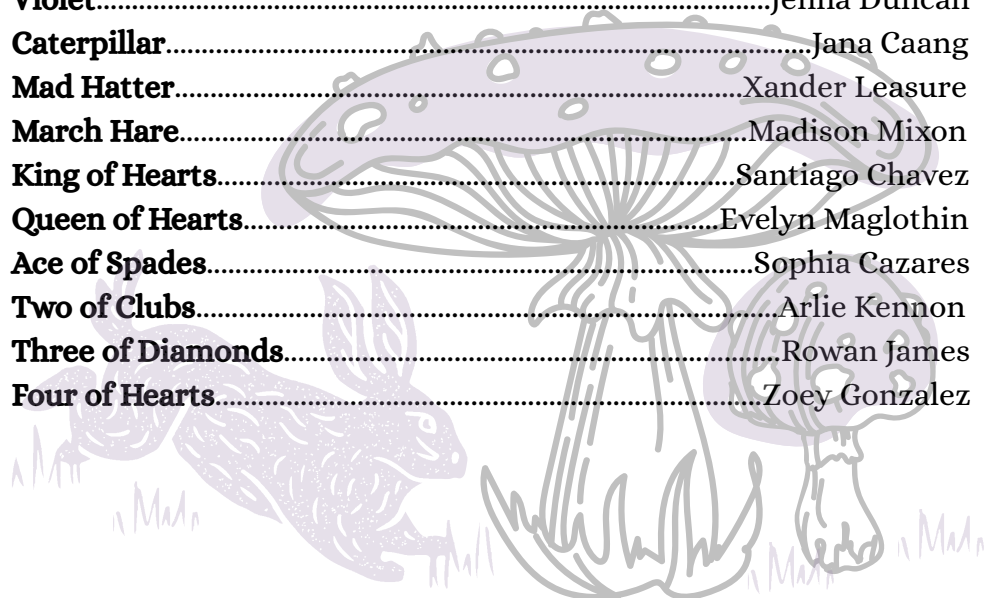
Finale

Dons



The Cast

Alice	Karleigh Anderson
Tall Alice	Edie Swymn
Small Alice	Zaylee Stewart
Mathilda	Madalyn Stansbury
Friend 1	Stevie Hime
Friend 2	Lydia Morris
Cheshire Cat 1	Alexa Vail
Cheshire Cat 2	James Ross
Cheshire Cat 3	Harmony Jackson
White Rabbit	Maggie Moyer
Doorknob	Levi Carr
Dodo Bird	Alyssa Jackson
Tweedle Dee	Josh Duncan
Tweedle Dum	Carter Cavaness
Rose	Cacie Edwards
Lily	Aubreigh Weaver
Petunia	Annapearce Fairhead
Daisy	Sophie Palmer
Violet	Jenna Duncan
Caterpillar	Jana Caang
Mad Hatter	Xander Leasure
March Hare	Madison Mixon
King of Hearts	Santiago Chavez
Queen of Hearts	Evelyn Maglothin
Ace of Spades	Sophia Cazares
Two of Clubs	Arlie Kennon
Three of Diamonds	Rowan James
Four of Hearts	Zoey Gonzalez



The Cast

Wonderland Ensemble:

Mirabella Rogers
Colette Morrison
CeCe RebaCamp
Marley Copeland
Sydney Moore
Oakley Ballard
Mary Layla Mosley
Arlie Kennon
Madalyn Stansbury
Stevie Hime
Lydia Morris
Alexa Vail
James Ross
Harmony Jackson
Maggie Moyer
Evan Brown
Rees McDowell
Edie Swymn

Levi Carr
Alyssa Jackson
Josh Duncan
Carter Cavaness
Cacie Edwards
Aubreigh Weaver
Annapearce Fairhead
Sophie Palmer
Jenna Duncan
Jana Caang
Xander Leasure
Madison Mixon
Santiago Chavez
Evelyn Maglothin
Sophia Cazares
Rowan James
Zoey Gonzalez
Zaylee Stewart



Special Thanks

GLEND A FRANGENBERG

ELISABETH WHITE

KATHRYN STANSBURY

KLARA ERICKSON

JORDAN KUIZIN

MICHELE REBA

KRISTI LEASURE

GRACE FARISH

Director's Note

Alice in Wonderland is a classic for a reason—its characters are unforgettable! From the Mad Hatter and the Cheshire Cat to the Queen of Hearts and the White Rabbit, everyone knows and loves this whimsical world. Over the years, the story has been adapted in countless ways, but the core themes remain the same. One that really resonates with our cast is the challenge of growing up. Alice is constantly thrown into strange and confusing situations that reflect what it's like for a child to navigate the complexities of the adult world.

But my favorite theme—and the one I hope sticks with our audience tonight—is the journey of discovering who you are. As Alice shrinks, grows, and meets all kinds of curious characters, she begins to question her identity. By the end of her adventure, she has a clearer sense of self and a new confidence in who she is. That's what I hope our young performers take with them after this production: pride in who they are and excitement about who they're becoming.

I am immensely proud of these students. In such a short time frame, they have worked so hard on learning the music, choreography, and their lines. They have excelled in bringing this production to life with dedication and commitment. Not only that, but they are a joy to be around! Watching them work together to create something magical has been a privilege, and I couldn't be more honored to share their hard work with you tonight.

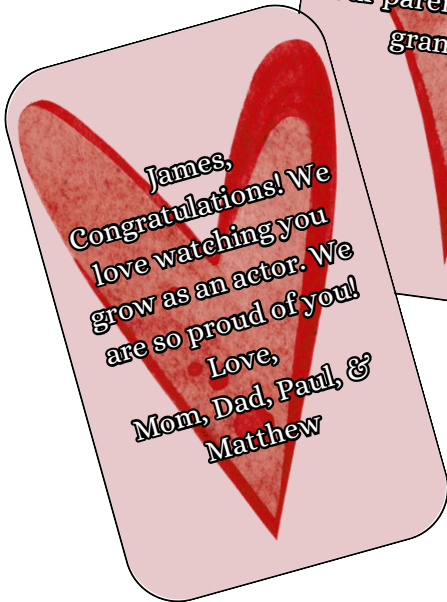
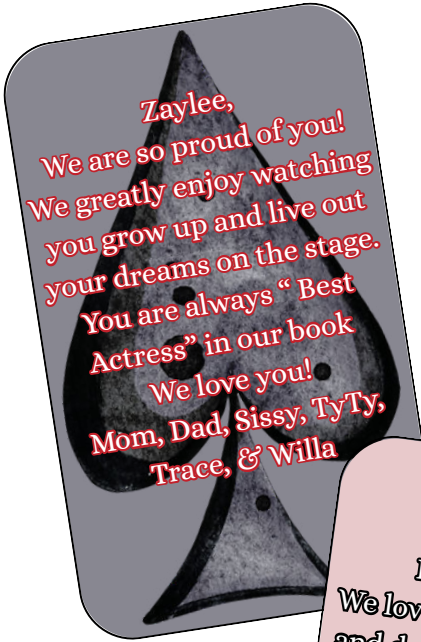
I would like to extend my gratitude to all the parents for allowing your children to participate in this camp. Your support—whether through helping with props, chaperoning backstage, or countless other contributions—has been invaluable to our production. A huge thank-you to the incredible staff at the FOA. Your dedication to not only this show, but to enriching our community through your talents is truly inspiring. To Kilee—thank you for being an amazing assistant director. You carry your many responsibilities with such grace and reliability. To Emma—thank you for sharing your vision and creativity; it's been a joy collaborating with you. And to Katy—your musical direction brought this show to life in such a beautiful way. To my family—thank you for your constant love and encouragement. And to my husband, Colton—thank you for being my rock, my biggest supporter, and my best friend. I love you!

We hope tonight's show makes you laugh, cheer, and maybe even see a little of yourself in these wonderfully unconventional characters.

Enjoy the show!

Dana Bruff

Stage Notes



Stage Notes

Maggie,
We are so proud of you!
We love watching you
onstage, but seeing the
kind dedicated, and
beautiful young woman
you have become is just
beyond words!
We love you so much!
Dad, Mom, Reagan, &
Jake

Eddie,
We are so proud of you.
We love watching you
on the stage .
Love,
Dad, Mom, & Rocco

Rowan,
You have always been
such a shining star!
We are so proud of you
for taking the leap into
your first production
experience!
Love,
Mom & Dad

Karleigh,
We are so proud of you!
We love to watch you
on stage and your
growth this summer.
We know you will
make our world a
wonderland.
Mom, Dad, & Elleigh

Joshua,
Your creativity and
passion are inspiring.
We are so proud of you!
Love,
Mom, Dad, Jonas, &
Jessalyn

Jenna,
You are tenacious and
you keep running! I
wouldn't have it any
other way!
We love you,
Mom, Dad, Jonas, &
Jessalyn

Foundation of Arts Staff

Stephanie Epps

Joe Carr

Meridith Pierce

Anna Ganong

Jillian Laboy

James Rich

Aubrey DeFries

Isabel Viala

Ava Inman

Board of Directors

Russ Pierce / Maranda Nichols / Rob Spencer / Hans Hacker

Committees

Personnel & Education

Lesle Allen / Rebecca Orr / Russ Pierce / Janea Spades

Finance

Doug Maglothin / Rob Spencer

Development & Advocacy

Hans Hacker: Advocacy Chair

Lorenzo Balderas / Maranda Nichols / Rebecca Orr / Nancy Owens

Nominating

Lesle Allen / Maranda Nichols

Governance

Maranda Nichols / Janea Spades

Arts Center Instructors & Assistants

Aaliyah Spengler

Addie Escue

Annabelle Escue

Angela Castro

Anna Marie Wyatt

Anna Ganong

Annie Clark-Roberts

Ariel Avery

David Mason

Emma King

Erica Parker

Isabel Viala

Jennifer Carty

Jessica Maddox

Kasen Erickson

LeeAnn King

Lilly Escue

Lizzie Lewallen

Madalyn Stansbury

Maggie Moyer

Maranda Nichols

Matt Ball

Shawna Mann

Why Should I support the Foundation of Arts?

- We believe that engaging in the arts grows people and unites community
- We help people, and each other, learn discipline, teamwork, creativity, and focus through arts experiences - which arms them for success in any field
- We provide disciplined creative arts study and experiences trying our best to enable everyone to learn, regardless of their ability to pay
- We are a place for children and adults to participate in goal-oriented arts-study, in a non-competitive and technique-based environment
- We serve at least 500 families per week through arts education, theatre, and outreach activities
- We offer community theatre with ten different productions per year including The Nutcracker Ballet, musical theatre, and children's theatre
- We stand alone as an arts organization in Northeast Arkansas that provides live theatre at relatively low ticket prices for thousands of patrons each year—and a Pay What You Can performance for each show so that everyone can grow from live theatre
- We work with adults and children with disabilities through the arts, allowing them the opportunity to perform annually on stage
- We bring an annual count of 65,000 trips into downtown Jonesboro for our community
- We need your support—ticket sales and class tuition support only about half of what it takes to serve Northeast Arkansas and the more than 20,000 people we positively affect annually
- WE ARE YOUR COMMUNITY!

Professional Affiliations

Support for The Foundation of Arts is provided, in part, by the **Arkansas Arts Council**, an agency of the Department of Arkansas Heritage, and the National Endowment for the Arts.

Funding for advertising and promotion of The Foundation of Arts, its programs, and its events is provided, in part, by **The Advertising and Promotions Commission of Jonesboro.**

The Foundation of Arts, Forum Theater and The Arts Center are licensed under federal law by **SESAC, Inc.**
55 Music Square East
Nashville, TN 37203.

The Foundation of Arts, Forum Theater and The Arts Center are licensed under federal law by **BMI, Inc.**
10 Music Square East
Nashville, TN 37203.

The Foundation of Arts, Forum Theater and The Arts Center are licensed under federal law by **ASCAP.**
2675 Paces Ferry Road, SE, Suite 350
Atlanta, GA 30339.

The Foundation of Arts is a member of **Jonesboro Regional Chamber of Commerce**, American Association of Community Theatre, Arkansas Community Theatre Association, Americans for the Arts, Association for Fund Raising Professionals, and Arkansas Coalition for Excellence.

This performance has been legally licensed and all associated rights and royalties have been paid in full by The Foundation of Arts. Under strict penalty of law (punishable by steep fines, revocation of license, and/or imprisonment), no part of this production, nor any implications or representations of this production, can be reproduced for public, private, profitable, charitable, or other purposes.

AD

THE FOUNDATION OF ARTS
&
THE CITY OF JONESBORO
ARE PROUD TO PARTNER IN IMPROVING THE
ARTS IN NORTHEAST ARKANSAS!



AD



DJA

DOWNTOWN

JONESBORO ALLIANCE

AD

THANK YOU
M.G. MEYERING

&

INTERIORS BY DESIGN
FOR THE FANTASTIC UPDATES
TO OUR ARTS CENTER!



MG Meyering
Interiors By Design



New Construction
Room Additions
Residential and
Commercial Office
Bathrooms *(Complete)*
Kitchens *(Complete)*
Trim Works • Hardware
Flooring • Lighting
Window Treatments
(Drapes, Shades, Rollers, Blinds)
Fabrics • Custom Bedding
Furniture and Decor
(Upholstered and Case Goods)
Accessories • Antiques
Wallpaper • Painting
Christmas Decorating
(Interior)
*Arkansas Licensed Contractor
and Interior Designer*

901-300-0280

intbydesign1@gmail.com

InteriorsByDesignArkansas.com

Interiors By Design is conveniently located in the heart of historic downtown Jonesboro at 1001 Union Street.

Owner M.G. Meyering

Office hours: 10am-5pm Monday-Friday

Supporting the FOA

Make a financial gift:

Scan the QR code or visit foajonesboro.org/giving to make a one-time or recurring gift. Every donation is valuable in sustaining our organization and helping us create more opportunities for our community to experience the arts.



Donate an item from our WISHLIST:

- 2 High-Back Executive Leather Office Chairs
- RUBBERMAID High-Capacity Cleaning Cart stocked with supplies
- 8 LIFETIME 8-foot rectangle folding table(s)
- 10 LIFETIME 6-foot round folding table(s)

We always welcome donations of...

- Non-slip hangers
- Large pieces of un-sewn fabric for costume shop
- 8-foot dimensional lumber (2x4s, 2x6s, 1x4s, 1x3s, 1x2s)
- 2-inch paint brushes
- Paint rollers and covers
- Art Supplies: acrylic paints, canvases, foam boards, sketch pads, etc.
- Office Supplies: post-it notes, ink pens, etc.

Support us while you SHOP:



Log in to your account at Kroger.com.
Locate the section titled Community Rewards.
Search "Foundation of Arts" (organization #WP291). Shop as normal and the FOA gets a donation!

Thank You to our Generous Donors!

STARS (\$20,000+)

Parker, Don and Lynn
A & P Commission
Young, Joe Clay and Pam
Herget, Ted and Amanda
Arkansas Arts Council

CHAMPIONS (\$10,000+)

Allen Engineering, Inc.
Tedder, Barry and Lisa
St. Bernards Healthcare and Medical Group
Swept Away Janitorial
Meyering, MG/Ferguson, Conley
Macon, Nikki
Howard, Don
Smith, Shane
Pulliam, Kevin and Kristi

PARTNERS (\$5,000+)

Pierce, Russ and Meridith	Nichols, Maranda
Ritter Communications	First National Bank
First Community Bank	Cooper, Tim and Candace
NEA Baptist Clinic	Hytrol Conveyor Company, Inc.
Arkansas Community Foundation	Memphis Travel
Owens, Nancy	First Horizon Bank
Parikh, Mona and James King	

Thank You to our Generous Donors!

ENTHUSIASTS (\$2,500+)

Arvest Bank
Arvest Bank Foundation
Signature Bank
Carr, Joe & Lauryn
City of Jonesboro
Hoffman, Matt and Courtney

Burns, Steve and Teresa
Wenger, Alyssa
Kueter, Diane
First Security Bank
Dacus, Max & Jennifer

ADVOCATES (\$1,000+)

Exchange Club of Jonesboro
Listenbee, Ryan and Kelli
Dacus, Mary
Fahlberg, Zach and Amanda
Polk, Michael
Deacon, Dorine
Hall, Ray and Barbara
Shannon, Claudia
Yarbrough, Lynn
Daniel, David
Miller, Charles and Linda
Moore, Ryan and Angela
KASU Radio

Orr, Wally and Rebecca
Watson, Jeremy and Ashley
Kelley, Dana and Kelly
Williams, Allen and Danna
Wiggins, Mark and Sondra
NEA Baptist Hospital Auxiliary
Inboden, Mary Hollis
Miller, Kevin
Holloway, Bob and Margaret
Mahan, Mitchell
Care Hospice, Inc.
Dierksen Hospice
Smith, Mark
Corinth Coca Cola Bottling Works, Inc.

SUSTAINERS (\$500+)

Native Brew Works
United Cerebral Palsy of AR, Inc.
Spades, Janea
Ace One Technologies, LLC
Max Velocity Baseball, LLC
Escue, Jeremy and Amanda
Sammons, Nathan
Freeman, John and Lois

Lambert, Patricia
Childers, Chris and Judy
Gateway Sight and Sound
Way, Diana
Inboden, Kim and Toni
Sloan, Kitty
Kroger

Thank You to our Generous Donors!

ASSOCIATES (\$250+)

Allen, Eleanor
Langley, Sharon Spence
McDaniel, Scott & Taura
Puryear, Jeffrey and Shannon
Watkins, Brent and Patricia.
Schaeffer, Mike and Lynn
Haney, Faye
Pierce, Judy
Yates, Robin M.
Adcox, Jimmy

Leasure, Kristi
Rahrle, Linda
Balderas, Lorenzo and Erika
Gonzalez, April Bowman
Holmes, Paul and Tommie
Turner, Frankie and Lisa
Bowman, Dr. and Mrs. Robert
Clements, William and Frances Malpezzi
American Online Giving Foundation, Inc
Stallings, Michael & Sheila

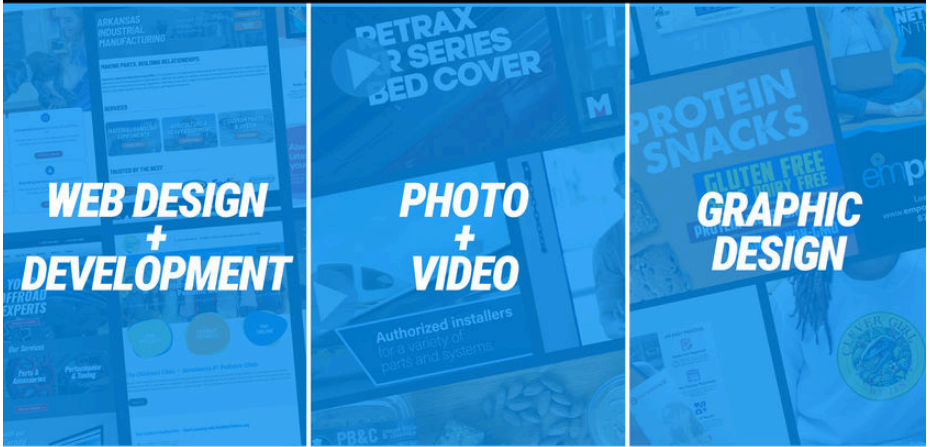
FRIENDS(\$249 ↓)

Smith, Kirby
Owens, Sarrah
Maloney, Stephanie
Melton, Bud and Nancy
The Medicine Shoppe
Johnson, Michael or Sandra
Cato Pet Hospital
Anonymous6
Lybolt, Robin
Nunnally, Lauren
Anonymous5
Patteson, Carter
Frangenberg, Erin
Washington, Gary
Cottam, Charles
Smith, Beverly
Cutler, Larry and Ann
Kary, Jill
Weeks, Hatton
Carter, Cara
Walker, Maria
Baker, Darrin

Allen, John and Caryn
Nisenbaum, Louis and Cathi
Spades, William and Janea
Goad, Bonnie
Young, Mark and Mitzi
Defries, Aubrey
Quinn, Johanna
Wheeler, Mary J.
Moore, Randy and Kim
Sharp Financial Services, Inc.
Glascock, Patricia
Anderson, Jeff & Shelly
Burrell, Henry
Mills, Lindsey
Ramirez, Pedro
Holbrook, Dave
Salo, Jennifer
Coker, Sarah
Long, Julie
DeWitt, Carrie
Ross, Linda

The Benevity Community Impact Fund

Your *local* source for



INTRODUCING
BOOST PACKS
EFFECTIVE
MARKETING
PACKAGES FOR
SMALL BUSINESSES



STARTING AT
\$500

simple**spark**
WEB / VISUALS / DESIGN

www.onesimplespark.com

Northeast Arkansas' only
local dance apparel company



DANCE SHOES
BALLET · TAP · JAZZ
CONTEMPORARY



APPAREL
LEOTARDS · TOPS
BOTTOMS · DRESSES



ACCESSORIES
BOWS · EARRINGS
TIGHTS · BAGS



GETONPOINTE.DANCE
870.926.1320
2810 E. Highland Dr.



ON POINTE

ADVENTURE AWAITS



Let's Plan Your Next Trip

WALT DISNEY World®

Disneyland

ADVENTURES*

BY DISNEY®



Disney CRUISE LINE



BOOK YOUR DREAM VACATION TODAY!

Neverland Adventure Guides

- Laura McDowell

870.882.2975

laura@neverlandadventureguides.com

AD



MATT SILAS ARCHITECT



212 EAST WASHINGTON AVE.
JONESBORO, AR 72401



(870) 268-0500



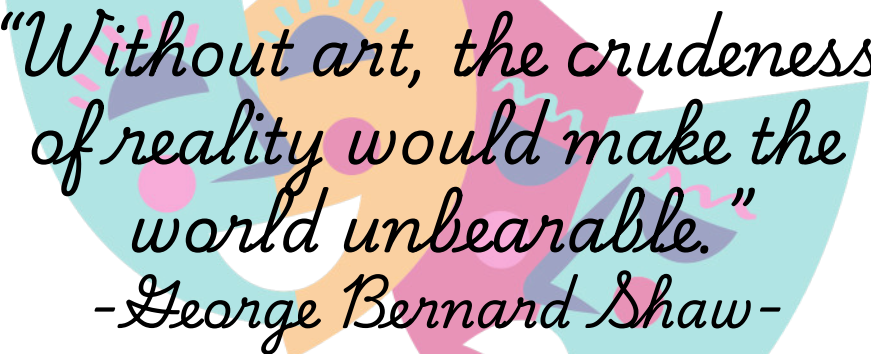
MATTSILASARCHITECT.COM

AD

KASU

91.9FM • KASU.ORG

*Proudly Supports
the Arts*



*"Without art, the crudeness
of reality would make the
world unbearable."
-George Bernard Shaw-*

AD



**A Proud Supporter of the
Arts in Our Community**

**TO THOSE WHO ENRICH
OUR LIVES THROUGH
THE PERFORMING
ARTS, WE OFFER A
STANDING OVATION.**



WWW.ALLENENG.COM



870.236.7751



PARAGOULD, AR

AD



Chicken Salad Chick

is proud to support

The Foundation of Arts!

facebook.com/chickensaladchickjonesboro
@jonesborochickensaladchick

AD

CME IS PROUD
TO SUPPORT THE

Arts


CMEinc.
PEDIATRIC THERAPY



Whatever marketing challenges
you face,



we're what's missing.



the
solutions
group

solutions.marketing

AD



Jonesboro

MEDIA GROUP



AD



SWEPT AWAY



Commercial • Industrial
Medical • Educational
Cleaning
Give us a call for your free
estimate!

(870) 340-8533

sweptawayjanitorial.com



TALK BUSINESS & POLITICS

Northeast Arkansas
Outstanding
Business Awards
2024 WINNER



AD



Keep Jonesboro Beautiful

KEEP AMERICA BEAUTIFUL AFFILIATE



EAB

EAST ARKANSAS BROADCASTERS

NEA SPORTS TALK
95.3
FM/970 AM
THE TICKET

 **95.9**
THE WOLF

101.7
KISS FM

94.1
THE BUZZ
EVERYTHING ROCK

101.3
NEWS TALK
1230
KBTM

THE BIG 107.9
KFIN 

Lost Pizza Co.



906 Southwest Dr. Suite A
Jonesboro, AR 72401

Mon-Thu: 10AM-10PM

Fri-Sat: 10AM-11PM

Sun: 11AM-9PM

(870) 520-6227

AD

SUPERTINTS GRAPHICS

870-935-7799

VEHICLE WRAP COMPANY

Truck/Van Wraps

Signs

Banners

Logo Design

Fleet Graphics

Before



After



f Find us on
Facebook
supertintsgraphics

follow us on
twitter
supertintsusa



**open
6 days!**



3212 E. Nettleton Ave. 870-935-7799

AD



**M
N
B**

**MEN N' BLACK
TUXEDOS**

AD



Outrageously Dependable[®]





Eat. Shop. Play. The local's guide to NEA.



exploremornea.com

Facebook: Explore MOR NEA Instagram: @exploremor_nea

Dacus Mini Warehouses

Since 1977



Available Unit Sizes

5x10

10x10

10x12

10x20

10x30

10x40

12x30

12x40

- ▶ Insurance Available
- ▶ Fenced, 7-Day Access
- ▶ Over 700 Units
- ▶ 24 Hour Supervision

**Climate-Controlled
Units Available**

870.935.7860

www.dacusstorage.com
1804 West Washington

AD



LABOY RENOVATIONS LLC



Season Sponsors



FUNDED BY JONESBORO
ADVERTISING & PROMOTION COMMISSION



Arkansas
Arts Council

