



The Foundation
Of Arts

PLAYBILL



The Prince of Egypt

PRESENTED BY

CENTRAL BAPTIST

AND
JONESBORO AREA CHURCHES

Our Performers Appreciate Your Best!

- Late arrivals must wait at the back of the house until a scene change.
- The videotaping or other video or audio recording of this production is strictly prohibited.
- Turn your cell phones OFF.
- If you need to leave your seat, please wait for a scene change if possible.
- In case of an emergency, exits are located in the front and back of the auditorium.
- Restrooms are located on the mezzanine and in the lobby.
- If you're not saving this playbill as a keepsake, please give it to a staff member or leave it at the Box Office after the performance.
- Please be respectful of everyone's choices as we've all chosen to be here in community.

Thank you!

If you'd like to go paperless—The FOA wants to help!

Scan one of the QR codes in the lobby for a digital version of the Playbill.

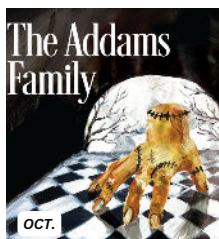
ABOUT US

FOA | The Foundation
Of Arts

Introducing...

OUR 2025-2026 THEATRE SEASON!

Be on the lookout for season ticket packages!



See you soon!

Find show dates, audition info, purchase tickets, and more by visiting our newly redesigned site! @foajonesboro.org

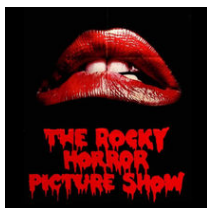


ABOUT US

FOA | The Foundation
Of Arts

More than just theatre!

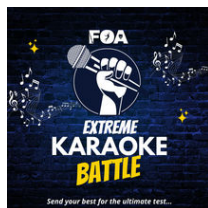
OCTOBER



NOVEMBER



FEBRUARY



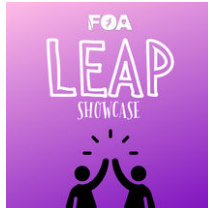
APRIL



APRIL



MAY



YEAR-ROUND



OUTREACH

“

LEARNING EXPRESSION THROUGH ARTS PROGRAMMING

EDUCATIONAL ENRICHMENT SERIES

PAY WHAT YOU CAN PERFORMANCES

TUITION ASSISTANCE PROGRAM

PUBLIC ART COMMISSION

AND MORE!

”

Interested in presenting a show or event? Want to learn more about how you can support our outreach? Let's chat!
Contact stephanie@foajonesboro.org

THANK YOU TO OUR SPONSORS

CENTRAL BAPTIST

YOU'RE
invited!



Visit with us on Sundays at 8, 9:30 & 11A

3707 HARRISBURG RD • JONESBORO

Watch Online

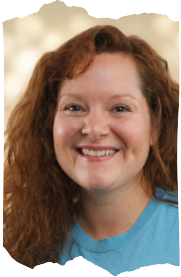
FACEBOOK.COM/CENTRALBAPTISTCHURCH,
CENTRALBAPTIST.COM/LIVE
CENTRAL BAPTIST CHURCH APP

centralbaptist.com



Meet the Creative Team

MARANDA NICHOLS, DIRECTOR



Maranda Nichols has taught Drama at the FOA since 2010 and has a rich background in theatre, starting from childhood church productions to community theatre and performances at Walt Disney World. She has directed several musicals, including Disney's Camp Rock and Frozen, Jr. Additionally, she serves as Secretary on the Board of Directors for the Foundation of Arts. Maranda holds a BS in Biology, a Master's in Public Health, and a Master's in Physician Assistant Studies. She has worked at St. Bernard's Occupational Health Partners for 12 years and actively pursues further education through dance classes and workshops at the Foundation of Arts.

EMILY STRODE, ASSISTANT DIRECTOR



Emily has been involved with the FOA since 2007. In addition to being seen onstage she has also worked behind the scenes on many productions serving as costumer, assistant director, and director. Emily taught high school Ridgefield Christian School and founded their theatre department in 2014. She now works for Jonesboro Public Schools. Most recently she was seen onstage in the FOA productions of Savannah Sipping Society, Sweeney Todd, The Music Man, and Hallelujah Girls. She wishes to thank you all for supporting the arts in NEA and hopes you will enjoy "The Prince of Egypt"

CASSIE LIOUH, MUSIC DIRECTOR



Cassie Liouh graduated from Arkansas State University in 2017 with a music education degree. She currently teaches general music and choir at Brookland Middle School. Cassie has performed as part of the orchestra for many productions including: Phantom Of The Opera, Beauty And The Beast, Mary Poppins, Little Mermaid, The Producers, Seussical, Pippin, The Secret Garden, and Hadestown.

Meet the Creative Team

JENNY WESTMORELAND, COSTUMER



Jenny Westmoreland works as a special education teacher at Valley View Junior High. She has two daughters, Eleanor and Evie, with her husband, John. She has participated in numerous plays as well as assistant directing. She has costumed House of Villains, Music Man, Hallelujah Girls, Secret Garden, Savannah Sipping Society, and Addams Family to name a few. In her spare time, she is a troop leader for a Girl Scout Troop and enjoys spending time with her family. Her favorite holiday is Halloween and her family designs fun costumes every year, most recently Elphaba and Glinda.

ABI BRADLEY, CHOREOGRAPHER



Abi was born and raised in Jonesboro, with the FOA as her second home. She has been involved in dance and theatre in various capacities for over 20 years and loves to choreograph for ballets and musicals at the Foundation of Arts as well as for schools around the area. Abi is a hair stylist, as well as a fingerprint technician here in Jonesboro. She lives in Trumann with her husband, Paydon, and their two dogs Gracie Mae and Sutton

JOE CARR, CREATIVE DIRECTOR, SET & LIGHT DESIGN



Joe has served as Technical Director and Scenic & Lighting Designer for more than 70 productions. Besides enhancing the quality of FOA productions, Joe is no stranger to the stage himself and has occasionally served as music director for a handful of productions. He is a musician and songwriter and has even had the pleasure of contributing original music to complement stories told on stage. Joe serves the FOA full-time as Creative Director leading our financial and technical operations.

Meet the Creative Team

AVA INMAN, SCENIC ARTIST



Ava is a local artist and FOA regular who has participated in numerous shows as well as lending her amazing painting skills to the set creation. She has assisted with stage art for several productions including Mean Girls Jr., Secret Garden: Spring Version, and Mary Poppins. With a keen eye for detail and a passion for bringing stories to life through her art, Ava's contributions have played a vital role in creating immersive experiences for audiences here at the FOA.

JAMES RICH, SET/LIGHTING DESIGN & CONSTRUCTION



James graduated Southern Arkansas University in the year of 2022. He moved to Jonesboro in 2023 and found The Foundation of Arts not long after his arrival. James has served as Technical Assistant for over 25 Productions! One of his favorite sets that he worked on was Charlotte's Web. He believes that theater is a powerful medium for storytelling and is committed to using his talents to enhance each narrative told on stage.



**SPECIAL THANKS FOR TECHNICAL
ASSISTANCE AND CABLING**

RUN CREW

LIGHTING TECHNICIAN: JAMES RICH

SOUND TECHNICIAN: JOE CARR

MUSIC/PROJECTIONS OPERATOR: JON SEALE

STAGE MANAGER: EMILY STRODE

ASSISTANT STAGE MANAGER: KILEE ERICKSON

SPOTLIGHTS: LEVI CARR & ELLEIGH ANDERSON

THE CAST

Yocheved.....	Liz Eberle
Young Miriam.....	Annabel Gary
Young Aaron.....	Asher Peeler
Queen Tuya.....	Marcela Little
Moses.....	Cory Epps
Ramses.....	Chris Terrell
Hotep.....	Jake Seale
Pharaoh Seti.....	Joey Caang
Nefertari.....	Katlyn Weaver
Tzipporah.....	Stephanie Epps
Miriam.....	Liz Goad
Aaron.....	Jackson McGinnis
Leah.....	Shana Manalo
Keturah.....	Mia Caang
Jethro.....	James Addison
Egyptian Overseers/Guards.....	Kevin Clark, Kalel Manalo, Keagan Pointer, Jackson McGinnis

Hebrews

Lauren Snavelly	Carmen Martinez	Sonnet Hicks
Kevin Clark	Maddie Duncan	Klara Erickson
Kristy Price	Silas Shackelford	Maggie Peeler
Holly Slinkard	Sara Norris	Silas Parks
Emily Bowman	Anna Norris	Evie Westmoreland
Mia Caang	Brynlee Tibbs	Jenna Tennison
Gabriela Varela-Polio	Benjamin Lawrence	Sara Tennison
Gabriel Rodriguez	Asher Peeler	Jennifer Dodson
Noah Andrews	Shana Manalo	Macy Epps
Cody Springer		Jana Caang

Dancers for the Nile.....	Maggie Moyer, Abigail Earley, Lilly Escue, Annabelle Escue, Silas Shackelford, Jana Sullivan
Young Ramses.....	Coleman Epps
Priests.....	Kevin Clark, Kristy Price Cody Springer, Holly Slinkard

THE CAST

Egyptians at Court of Seti

Dailey Reitmair
Myra Caang
Arlie Kennon

Gabriel Patrick-Hall
Annabel Gary

Marley Copeland
Nola Kate Spencer
Benjamin Lawrence

Dancers at Court of Seti.....Abigail Earley, Emily Bowman,
Gabriela Varela-Polio, Carmen Martinez
Old Hebrew Man.....Noah Andrews
Sands Dancers.....Maggie Moyer, Jana Sullivan,
Abigail Earley, Silas Shackelford
Shepherd 1.....Cody Springer
Shepherd 2.....Keagan Pointer

Midianites

Noah Andrews
Gabriel Rodriguez
Carmen Martinez
Gabriela Varela-Polio
Mia Caang
Jana Caang
Holly Slinkard

Kevin Clark
Kristy Price
Kalel Manalo
Emily Bowman
Abigail Earley
Aubrey Goad
Keagan Pointer

Klara Erickson
Maddie Duncan
Sonnet Hicks
Evie Westmoreland
Gabriel Patrick-Hall
Asher Peeler
Macy Epps

God's Voice.....Kalel Manalo
Moses' Sons.....Asher Peeler, Coleman Epps
The Plagues.....Sonnet Hicks, Sara Tennison,
Jenna Tennison, Maddie Duncan, Evie Westmoreland
The Plague of Death.....Silas Shackelford,
Maggie Moyer, Abigail Earley
Mother.....Maggie Peeler
Child.....Jenna Tennison
A Boy.....Gabriel Patrick-Hall
Mother.....Myra Caang
Sister.....Sara Tennison
Young Child.....Evie Westmoreland
Ramses' Son, Seti.....Benjamin Lawrence

ABOUT THIS SHOW

Journey through the wonders of Ancient Egypt as Ramses and Moses, two young men raised together as brothers in a kingdom of privilege, find themselves suddenly divided by a secret past. One must rule as Pharaoh, the other must rise up and free his true people; both face a destiny that will change history forever.

ACT 1

DELIVER US
FASTER
ONE WEAK LINK
HIS SON AND HEIR
FOOTPRINTS ON THE SAND
SETI'S RETURN
DANCE TO THE DAY
ALL I EVER WANTED
THE LAWS OF THE GODS
MAKE IT RIGHT
MOSES IN THE DESERT
THE WELL
THROUGH HEAVEN'S EYES
FASTER (REPRISE)
NEVER IN A MILLION YEARS
ACT 1 FINALE



INTERMISSION

ACT 2

THROUGH HEAVEN'S EYES (REPRISE)
THE NAMING CEREMONY
ALWAYS ON YOUR SIDE
SIMCHA!
DELIVER US (REPRISE)
THE PLAGUES
THEY WILL BE FREE
DEATH OF THE FIRSTBORN
FOR THE REST OF MY LIFE
HEARTLESS
WHEN YOU BELIEVE
ACT 2 FINALE
BOWS

STAGE NOTES

Maggie and Asher, we are so proud of you for doing this! Its been such a blessing seeing you grow in this craft! And after the crazy performance schedule, and you guys are exhausted, I encourage you to do what God told Moses, "Take two tablets and call me in the morning."
Love, Justin and Hazel

Maggie and Asher,
We are so proud of you both and cant wait to see you on the stage!
Asher... NO hip shaking!
Love, Lolly and Poper Peeler

Annabel, we love you and are so proud of you! Break a leg!

Love,
Mom, Dad, & Benjamin

Maggie - we are so excited to watch you dance. We are so proud of your commitment and how very hard you work. You are so talented!
Can't wait for the next one!

We love you,
Mom, Dad, Reagan, & Jake

STAGE NOTES

Dear Joey (Babe) / Dad,
We could not be more proud of you!!! You
are a shining example of going outside your
comfort zone, trying out new things and
always giving it your best!
What a good looking Pharaoh you are!!
Break a leg!!! We love you always and
forever.

Blessings and hugs,
Myra, Mia and Jana

Dearest Ate Mia and Jana,
We had such an amazing time doing this show with
you. It's an honor and a great delight to share the
stage with you both. We know and realize how hard
you work at every show. Always remember that your
talents and gifts are from God. Always be grateful,
and continue to use these talents for His glory. Never
forget your value lies in your identity in Christ! We
love you always and forever!
Love & Blessings,
Dad & Mom

Our dear Noah and Gabe,
What a blessing you both have been in our lives!
We have enjoyed being in the show with you and
having you over for dinner after practices. Continue
to use your talents and all that you do for God's
glory! May you both continue to grow as godly men,
becoming awesome leaders in the community!

We love you,
Joey, Myra, Mia, Jana & Bjorn

DIRECTOR'S NOTE

This production has been such a joy to be directing. I began with a hugely talented cast and a movie that has been praised for its creativity and innovation at the time and the daunting task of bringing Bible stories to life on stage. The beauty of community theater is the collaboration we all bring from our various roles outside of the theater, but we come together to create an artistic production that can be an opportunity to grow ourselves, our cast mates and our community when done well.

This production has been done well. My goal in this production was to first create an enjoyable show, but in working with the cast and the material of the show I saw how humanizing this story is. Moses is not an epic superhero, he's a man who God leaned on to test his faith and to save his people. I think of the emotions I would have if asked to do the same and this story lets us see how a man can do as God asks, question God's reasons and fight his role in executing God's will. This story helps us to think about things we are called to do that certainly push us out of our comfort zone, but become the times when we grow the most. We are not as able to see the shift in humanity our actions may cause as we can with Moses, but we can know we are not alone in our wrestling with what we know we must do next. We can lean on the people around us to support us and even at their own costs can help us carry out our actions for the better.

I hope you enjoy this production and walk away with a greater respect for the beautiful and emotional journey that was Moses' role in The Exodus.

-Maranda Nichols

SPECIAL THANKS

John & Wanda Strode

Marcela Little

Jon Seale

Jake Seale

Evie Westmoreland

Eleanor Westmoreland

John Westmoreland

Angela Duncan

Christi Crawford

Liz Goad

Amy Earley

Dana Bruff

First United Methodist Church

New Antioch Baptist Church

Amanda Nichols

Chris Nichols

Kasen Erickson

Karleigh Anderson

Cherice Mayo

Guy Cohen

FOUNDATION OF ARTS STAFF

Stephanie Epps

Joe Carr

Meridith Pierce

Anna Ganong

Jillian Laboy

James Rich

Aubrey DeFries

Isabel Viala

Ava Inman

Board of Directors

Russ Pierce / Maranda Nichols / Rob Spencer / Hans Hacker / Amanda Herget

Committees

Personnel & Education

Lesle Allen / Rebecca Orr / Russ Pierce / Janea Spades

Finance

Doug Maglothin / Rob Spencer

Development & Advocacy

Hans Hacker: Advocacy Chair

Lorenzo Balderas / Maranda Nichols / Rebecca Orr / Nancy Owens

Nominating

Lesle Allen / Maranda Nichols

Governance

Maranda Nichols / Janea Spades

Arts Center Instructors

Aaliyah Spengler

Addie Escue

Anna Ganong

Anna Marie Wyatt

Annabelle Escue

Annie Clark-Roberts

Ariel Avery

David Mason

Emma King

Isabel Viala

Jessica Maddox

Kasen Erickson

LeeAnn King

Maranda Nichols

Mallory Anderson

Matt E. Ball

Shawna Mann

WHY SUPPORT THE FOUNDATION OF ARTS?

- We believe that engaging in the arts grows people and unites community
- We help people, and each other, learn discipline, teamwork, creativity, and focus through arts experiences - which arms them for success in any field
- We provide disciplined creative arts study and experiences trying our best to enable everyone to learn, regardless of their ability to pay
- We are a place for children and adults to participate in goal-oriented arts-study, in a non-competitive and technique-based environment
- We serve at least 500 families per week through arts education, theatre, and outreach activities
- We offer community theatre with ten different productions per year including The Nutcracker Ballet, musical theatre, and children's theatre
- We stand alone as an arts organization in Northeast Arkansas that provides live theatre at relatively low ticket prices for thousands of patrons each year—and a Pay What You Can performance for each show so that everyone can grow from live theatre
- We work with adults and children with disabilities through the arts, allowing them the opportunity to perform annually on stage
- We bring an annual count of 65,000 trips into downtown Jonesboro for our community
- We need your support—ticket sales and class tuition support only about half of what it takes to serve Northeast Arkansas and the more than 20,000 people we positively affect annually
- WE ARE YOUR COMMUNITY!

PROFESSIONAL AFFILIATIONS

Support for The Foundation of Arts is provided, in part, by the **Arkansas Arts Council**, an agency of the Department of Arkansas Heritage, and the National Endowment for the Arts.

Funding for advertising and promotion of The Foundation of Arts, its programs, and its events is provided, in part, by **The Advertising and Promotions Commission of Jonesboro.**

The Foundation of Arts, Forum Theater and The Arts Center are licensed under federal law by **SESAC, Inc.**
55 Music Square East
Nashville, TN 37203.

The Foundation of Arts, Forum Theater and The Arts Center are licensed under federal law by **BMI, Inc.**
10 Music Square East
Nashville, TN 37203.

The Foundation of Arts, Forum Theater and The Arts Center are licensed under federal law by **ASCAP.**
2675 Paces Ferry Road, SE, Suite 350
Atlanta, GA 30339.

The Foundation of Arts is a member of **Jonesboro Regional Chamber of Commerce**, American Association of Community Theatre, Arkansas Community Theatre Association, Americans for the Arts, Association for Fund Raising Professionals, and Arkansas Coalition for Excellence.

This performance has been legally licensed and all associated rights and royalties have been paid in full by The Foundation of Arts. Under strict penalty of law (punishable by steep fines, revocation of license, and/or imprisonment), no part of this production, nor any implications or representations of this production, can be reproduced for public, private, profitable, charitable, or other purposes.

About EFA Funds



What are EFA Funds?

EFA funds are a part of the Arkansas' Learns Act. They are public funds that are allocated to eligible families to support educational expenses outside of traditional public schools.

Using EFA at the FOA

- Parents can utilize EFA funds for our registration fee and class tuition.
- Parents are sent an invoice, and then they upload it through their EFA account. They do not have to pay out of pocket. We are directly paid through EFA. Invoices will be monthly.
- Find us listed as:
"The Foundation of Arts for NE Arkansas"

More Information

 870-935-2726

 email
aubrey@foajonesboro.org

FOA & THE CITY OF JONESBORO

THE FOUNDATION OF ARTS

&

THE CITY OF JONESBORO

ARE PROUD TO PARTNER IN IMPROVING
THE ARTS IN NORTHEAST ARKANSAS!



SUPPORTING THE FOA

Make a financial gift:

Scan the QR code to make a one-time or recurring gift. Every donation is valuable in sustaining our organization and helping us create more opportunities for our community to experience the arts.



Donate an item from our WISHLIST:

- 2 High-Back Executive Leather Office Chairs
- RUBBERMAID High-Capacity Cleaning Cart stocked with supplies
- 8 LIFETIME 8-foot rectangle folding table(s)
- 10 LIFETIME 6-foot round folding table(s)

We always welcome donations of...

- Non-slip hangers
- Large pieces of un-sewn fabric for costume shop
- 8-foot dimensional lumber (2x4s, 2x6s, 1x4s, 1x3s, 1x2s)
- Picture frames
- Bed Sheets
- 2-inch paint brushes
- Paint rollers and covers
- Art Supplies: acrylic paints, canvases, foam boards, sketch pads, etc.
- Office Supplies: post-it notes, ink pens, etc.

Support us while you SHOP:



Log in to your account at Kroger.com. Locate the section titled Community Rewards.

Search "Foundation of Arts" (organization #WP291). Shop as normal and the FOA gets a donation!

THANK YOU TO OUR GENEROUS DONORS!

STARS (\$20,000+)

A & P Commission
Don & Lynn Parker
Joe Clay & Pam Young

CHAMPIONS (\$10,000+)

Arkansas Arts Council
Hytrol Conveyor Company
Ted & Amanda Herget
Don & Hannah Howard

PARTNERS (\$5,000+)

Arvest Bank	Mona & James King Parikh
Chad Niell	NEA Baptist Clinic Hospital
Joe & Lauryn Carr	St. Bernards Healthcare & Medical Group
First Community Bank	University of Arkansas
Swept Away Janitorial	RightFiber

ENTHUSIASTS (\$2,500+)

Inspire Internet	Maranda Nichols
Ramson's Construction	Kevin & Kristi Pulliam
First National Bank	Suzanne Christenson
Lost Pizza	Max & Jennifer Dacus

MG & Conley Ferguson-Meyering

ADVOCATES (\$1,000+)

Renee Brady	Corinth Coca-Cola Bottling Works
Dorine Deacon	Exchange Club of Jonesboro
Nancy Owens	Wally & Rebecca Orr
Dr. Brannon & Suzy Treece	Kitty Sloan
Southern Bank	United Way of NEA
Golden Grotto	Russ & Meridith Pierce
Barry & Lisa Tedder	Cory & Stephanie Epps

THANK YOU TO OUR GENEROUS DONORS!

SUSTAINERS (\$500+)

ARKids	Lorenzo Balderas
Harold Copenhaver	Cynergy
Zach & Amanda Fahlberg	Blane & Susanne Hurt
Shane Smith	Kroger
NEA Baptist Auxiliary	Ryan & Kelli Listenbee
Emily Strode	Ryan & Angela Moore
Lynn Yarbrough	Michael Polk

ASSOCIATES (\$250+)

Jimmy Adcox	Jeff & Jessica Epps
American Online Giving Foundation	Bob & Margaret Holloway
Gearhead Outfitters	Kristi Leasure
Jeremy & Amanda Escue	Judy Pierce
Stephanie Maloney	David & Janice Kroeter
Scott & Taura McDaniel	Charles & Beverly Parker
Linda Rahrle	Kim Edens
Frankie & Lisa Turner	

FRIENDS(\$249 ↓)

Charles & Paula Cottam	Louis & Linda Clarke
Sharon Spence Langley	Dillon Davis
Faye Haney	Erin Frangenberg
Matt Silas Architect	Soumyasri Kambhatla
Bud & Nancy Melton	Carin McClung
Carter Patteson	Louis & Cathi Nisenbaum
Sarah Brown	Nathan Sammons
Mary J. Wheeler	Nicole Scott
Jeanna Volner	Hunter Young
Jami Nash	Rose Bruton
Cameron Phillips	Suzanne Bushong
Debbie Haas	

UPCOMING

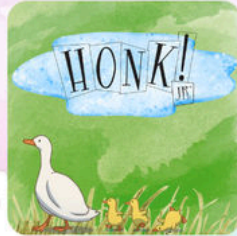
Coming up at the FOA



Sponsored by:
Jonesboro
MEDIA GROUP

Friday, Feb. 27th
@ 7:00 pm

*Sign up to
compete*



Join us for this heartwarming musical
adaptation of The Ugly Duckling!

March 13th @ 7:00pm
March 14th @ 7:00pm
March 15th @ 2:00pm



Buy tickets

Stage, Too Weekends

- 2/27 "Acoustic Friday"- Delta Bruise @ 7:00
- 2/28 Karaoke Night @ 7:00
- 3/6 "Acoustic Friday"- Echoes of Yesterday @ 7:00
- 3/7 "Paint & Sip" Workshop @ 7:00
- 3/13 "Acoustic Friday"- Zack Smock @ 7:00
- 3/14 Open Mic Night @ 7:00

Sponsored by:

Lost
Pizza
Co.

RightFiber

*Follow
us on
Facebook*



AD

THANK YOU
M.G. MEYERING

&

INTERIORS BY DESIGN

FOR THE FANTASTIC UPDATES TO
OUR ARTS CENTER & STAGE, TOO!



IB
MG Meyering
Interiors By Design

BEST
OF NORTHEAST ARKANSAS
2024 WINNER

BEST
OF NORTHEAST ARKANSAS
2023 WINNER

QR Code

- New Construction
- Room Additions
- Residential and Commercial Office
- Bathrooms *(Complete)*
- Kitchens *(Complete)*
- Trim Works • Hardware
- Flooring • Lighting
- Window Treatments *(Drapes, Shades, Rollers, Blinds)*
- Fabrics • Custom Bedding
- Furniture and Decor *(Upholstered and Case Goods)*
- Accessories • Antiques
- Wallpaper • Painting
- Christmas Decorating *(Interior)*

Arkansas Licensed Contractor and Interior Designer

901-300-0280

intbydesign1@gmail.com

InteriorsByDesignArkansas.com

Interiors By Design is conveniently located in the heart of historic downtown Jonesboro at 1001 Union Street.

Owner M.G. Meyering

Office hours: 10am–5pm Monday–Friday

AD



12 Flavors of Chicken Salad
Made from Scratch
Every Day

Visit the **Jonesboro Chick!**

2821 Parkwood Rd, Jonesboro, AR 72401

(870) 336-5678



AD

PRINTING SERVICES

ARKANSAS STATE



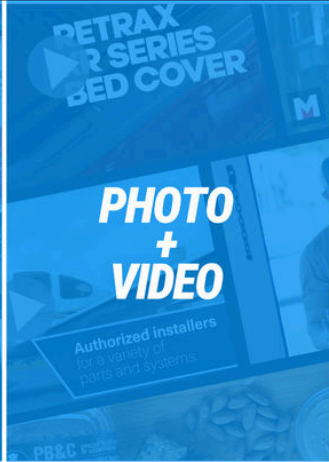
PRINTING FOR THE
PACK

AD

Your **local source** for



**WEB DESIGN
+
DEVELOPMENT**



**PHOTO
+
VIDEO**



**GRAPHIC
DESIGN**

INTRODUCING
BOOST PACKS
EFFECTIVE
MARKETING
PACKAGES FOR
SMALL BUSINESSES



STARTING AT
\$500

simple**spark** 
WEB / VISUALS / DESIGN

www.onesimplespark.com

AD

KASU

91.9FM • KASU.ORG

*Proudly Supports
the Arts*

*"Without art, the crudeness
of reality would make the
world unbearable."
-George Bernard Shaw-*



In the pursuit, and execution, of our mission statement, KLEK holds true to the following core values:

- Engaging the community through consistent presence and outreach;
- Enhancing the quality of life of our community through educational, cultural, entertainment, and community affairs programs;
- Facilitating conversations to nurture and empower young minds of the community;
- Treating all stakeholders with dignity and respect;
- Conducting ourselves with the highest ethics and integrity.



Setting the stage for your financial success.



As a patron of the performing arts, you appreciate a good drama - except when it comes to banking. At Simmons Bank, we want our customers financial needs to take center stage.



AD

NORRIS

Mortgage Team

POWERED BY CANOPY

Proudly supports the arts

Helping our community feel at home...
on stage and beyond

David Norris

Branch Manager/
Sr. Mortgage Banker
NMLS# 996450



 870.480.6307

 dnorris@canopymortgage.com

 www.norrismortgageteam.com

 LEARN MORE



Norris Mortgage Team Powered By Canopy Mortgage, LLC • 360 TECHNOLOGY COURT, STE 200 • LINDON UT 84042
NMLS Consumer Access #: 1359687 www.nmlsconsumeraccess.org • 877-426-5500

AD



SWEPT AWAY



Commercial • Industrial
Medical • Educational
Cleaning
Give us a call for your free
estimate!

(870) 340-8533

sweptawayjanitorial.com



TALK BUSINESS & POLITICS

Northeast Arkansas
Outstanding
Business Awards
2024 WINNER



AD



Jonesboro

MEDIA GROUP



WiFi so
great you'll be

Gigsmitten



Fall in love with your
internet at **RightFiber**.

Get the fastest, most reliable 100% fiber to the home internet, local 24/7 tech support, and now introducing **Smart WiFi**.



No
Contracts



Free
Installation



Smart WiFi &
Home® App



No
Hidden Fees



Unlimited
Data

Start loving your internet today!



RightFiber

SMART WiFi | TV | PHONE

833.717.4448 • RightFiber.com

Call or scan to sign up.

AD



Jonesboro
OCCASIONS

THE CITY MAGAZINE

Supporting the Arts in Jonesboro Since 2003

 Jonesboro Occasions  @JboroOccasions  @jonesborooccasions  JboroOccasions  Jonesboro.com

AD

EAB

MEDIA GROUP

NEA SPORTS TALK
95.3
FM/**970AM**
THE TICKET

 **95.9**
THE WOLF

101.7
KISS FM

94.1
THE BUZZ
EVERYTHING ROCK

101.3
NEWS TALK
1230
KBTM

THE BIG 107.9
KFIN 

AD

Lost
Pizza
Co.



906 Southwest Dr., Suite A
Jonesboro, AR 72401

3410 E. Johnson
Jonesboro, AR 72401

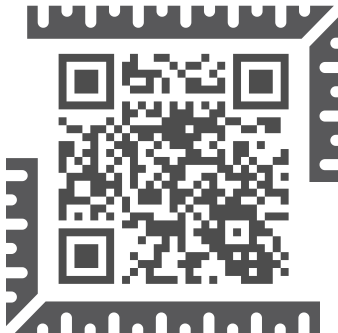
Sun-Thu: 10:30AM-9PM

Fri-Sat: 10:30AM-10PM

(870) 520-6227



LABOY RENOVATIONS LLC



AD

Whatever marketing challenges
you face,



we're what's missing.



the
solutions
group

solutions.marketing

BRANDING · ADVERTISING · VIDEO · WEBSITES · DIGITAL · PR · SOCIAL

AD



DJA

DOWNTOWN

J O N E S B O R O A L L I A N C E



Keep Jonesboro Beautiful

KEEP AMERICA BEAUTIFUL AFFILIATE

Dacus Mini Warehouses Since 1977



Available Unit Sizes

5x10

10x10

10x12

10x20

10x30

10x40

12x30

12x40

- ▶ Insurance Available
- ▶ Fenced, 7-Day Access
- ▶ Over 700 Units
- ▶ 24 Hour Supervision

**Climate-Controlled
Units Available**

870.935.7860

www.dacusstorage.com
1804 West Washington

AD

Northeast Arkansas' only
local dance apparel company



DANCE SHOES
BALLET · TAP · JAZZ
CONTEMPORARY



APPAREL
LEOTARDS · TOPS
BOTTOMS · DRESSES



ACCESSORIES
BOWS · EARRINGS
TIGHTS · BAGS



BLOCH

GETONPOINTE.DANCE
870.926.1320
2810 E. Highland Dr.



GENERATIONS

FLORAL CO.

*Connecting people with the natural beauty of flowers
while infusing the journey with creativity and joy*



THE HYTROL STAGE



HYTROL

THE FOUNDATION OF ARTS IS
PROUD TO PARTNER WITH
HYTROL TO SPONSOR OUR STAGE
FOR THE 2025-2026 SEASON

SEASON SPONSORS

